

Manitoba's EMS Review

Manitoba Health



EMS in Manitoba

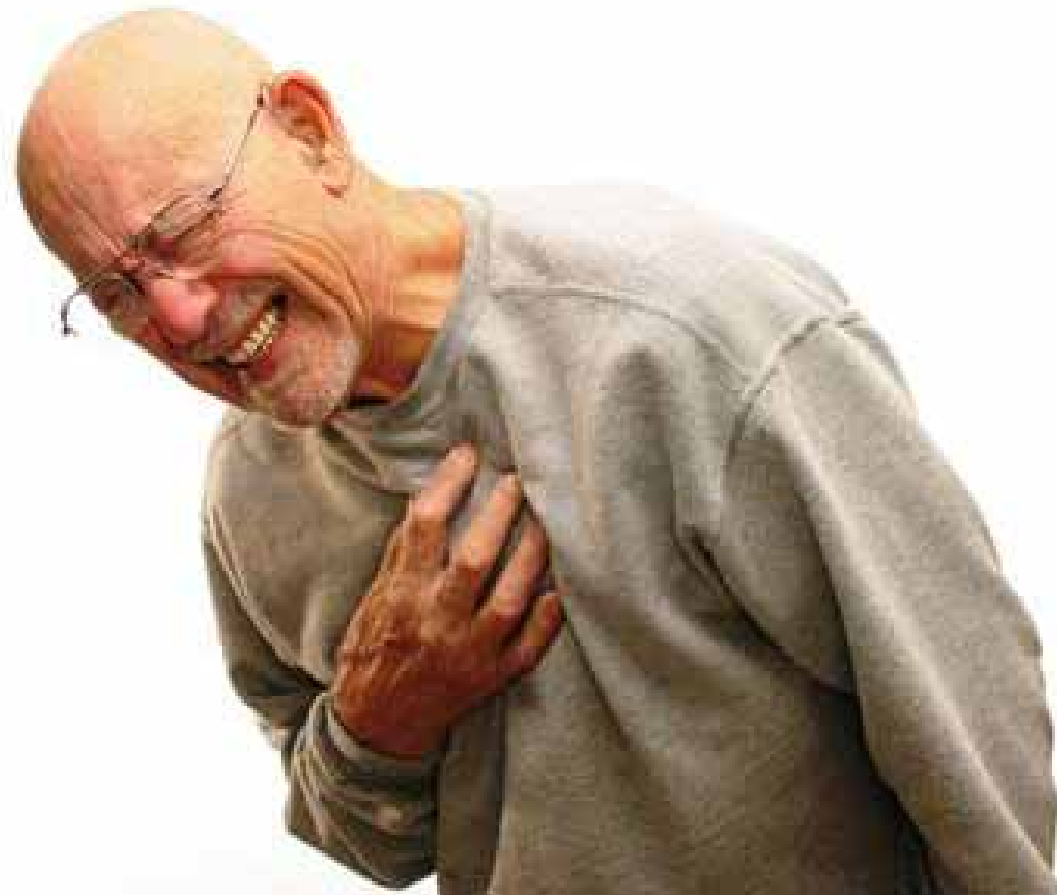






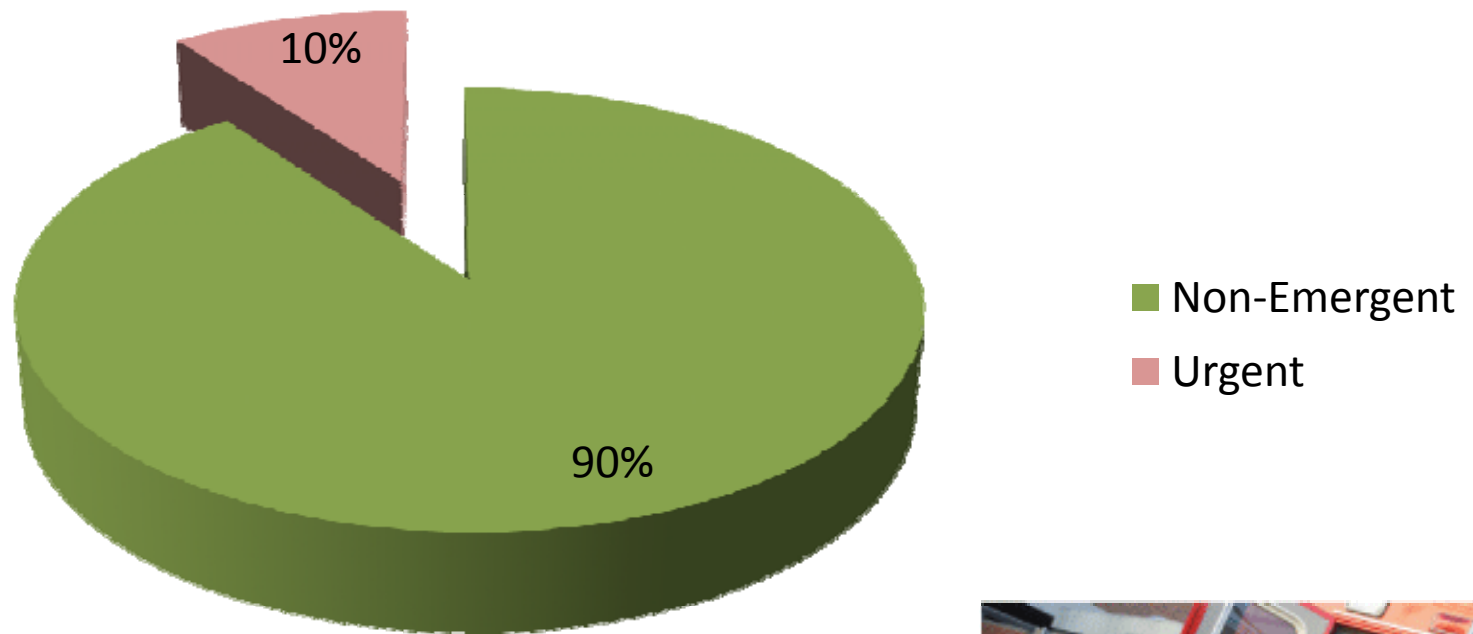








EMS Call Profile



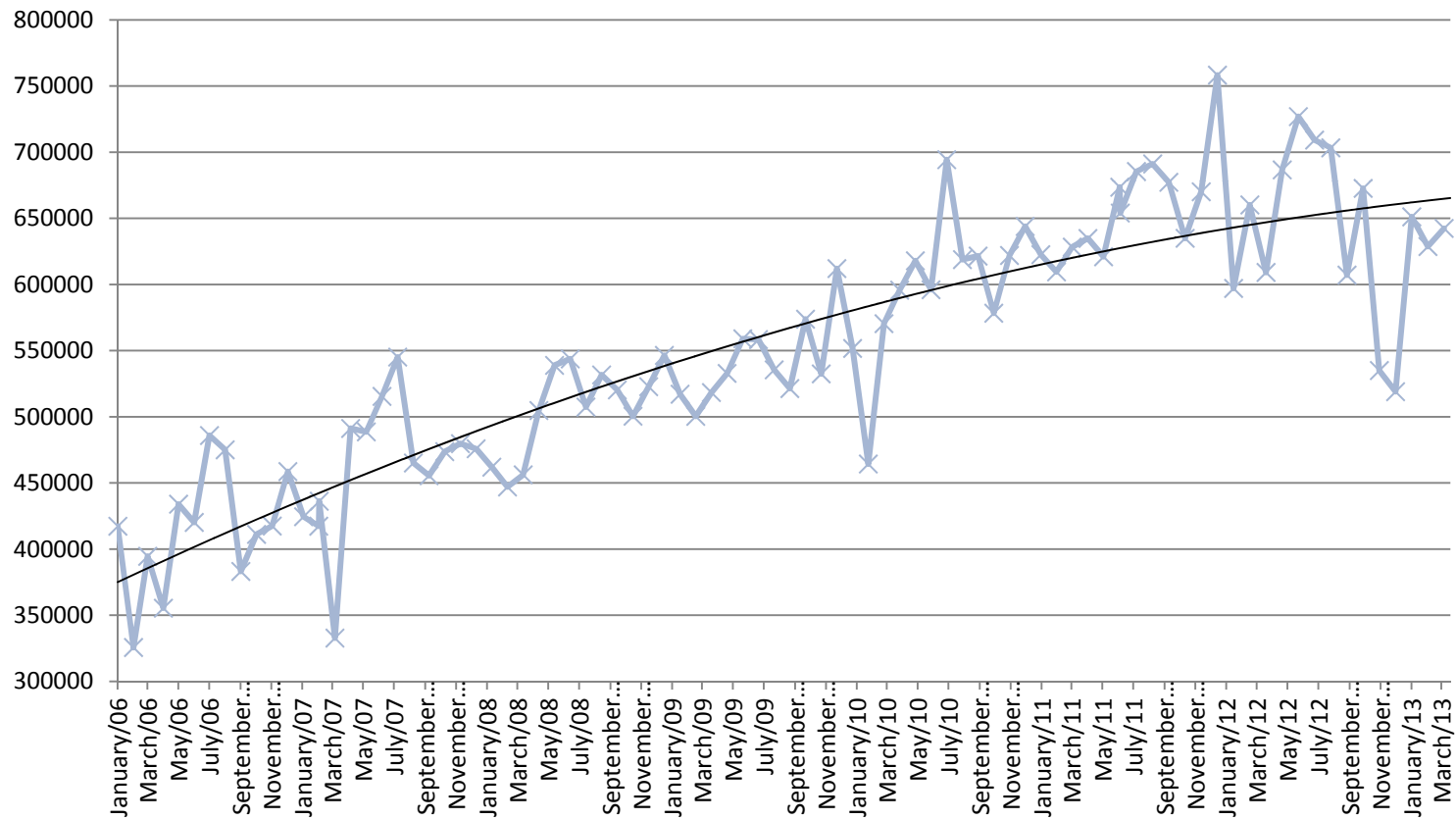
Call Demands

- High Utilization Areas
 - 8% to 15% growth annually
- Provincially
 - 24% last 5 years
 - 59% last 10 years



Growth in Demand

Manitoba EMS Fleet Monthly KM Driven



Increasing Sophistication





Deployment Model



The EMS Review

- To examine and guide:

“Evolving the EMS system in Manitoba into a more integrated, responsive, reliable and sustainable system in Manitoba”



Review Findings



Paramedics
as a
Profession



Medical
Leadership



System
Status
Management



Hot Button

- Station Consolidation

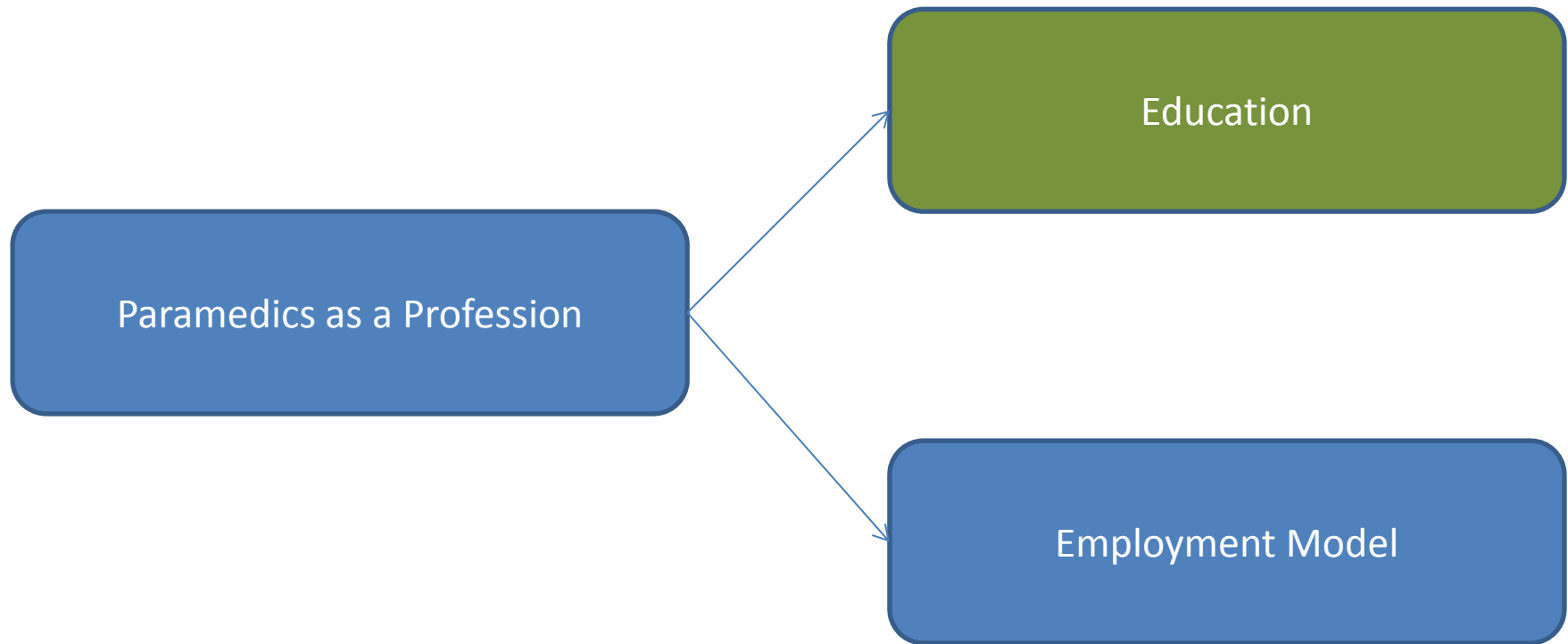


Paramedics as a Profession

```
graph LR; A[Paramedics as a Profession] --> B[Education]; A --> C[Employment Model];
```

Education

Employment Model











Paramedics as a Profession

```
graph LR; A[Paramedics as a Profession] --> B[Education]; A --> C[Employment Model];
```

The diagram consists of three rounded rectangular boxes. On the left is a blue box containing the text 'Paramedics as a Profession'. Two arrows originate from the right side of this box. One arrow points diagonally upwards and to the right, ending at a grey box containing the text 'Education'. The other arrow points diagonally downwards and to the right, ending at a green box containing the text 'Employment Model'. All boxes have a dark blue border.

Education

Employment Model

Employment Models

On Call Casual

Volunteer Model

Full Time Model

Employment Models

On Call Casual

Volunteer Model

Full Time Model



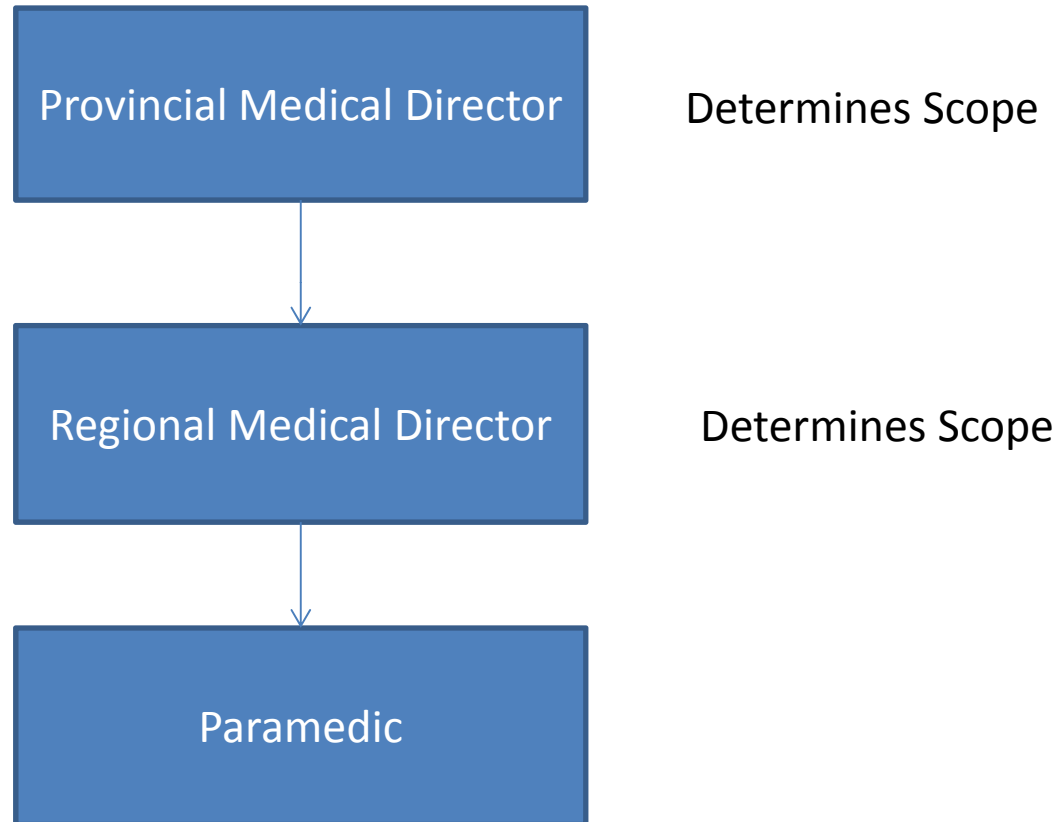
Future State



Medical Leadership



Current State



Provincial Medical Director



Regional Medical Director

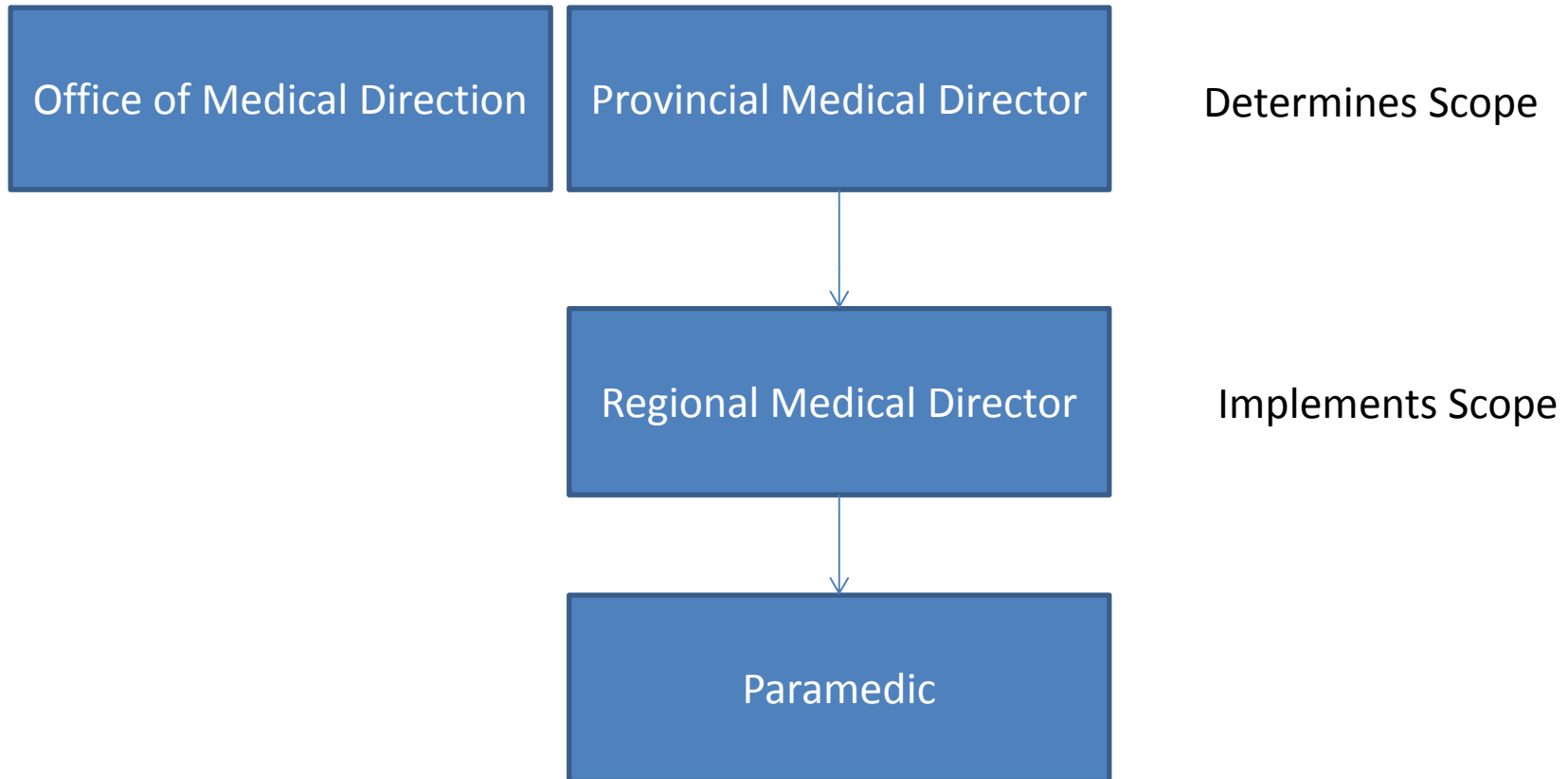


Paramedics

Consistency In Practice



Future State



Consistency In Practice



2011 Flood



System Status Management

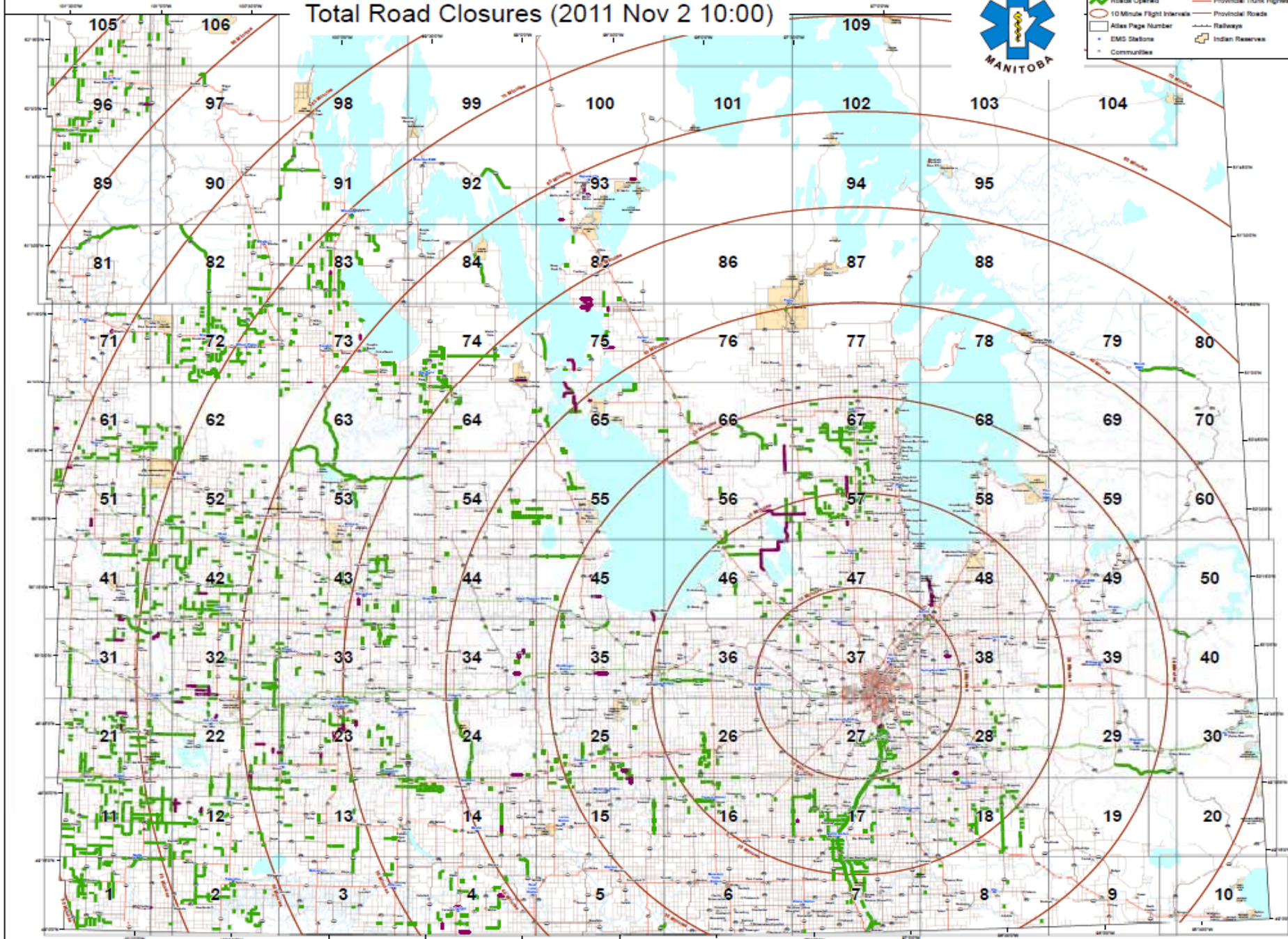


Medical Transportation Coordination Centre

Total Road Closures (2011 Nov 2 10:00)



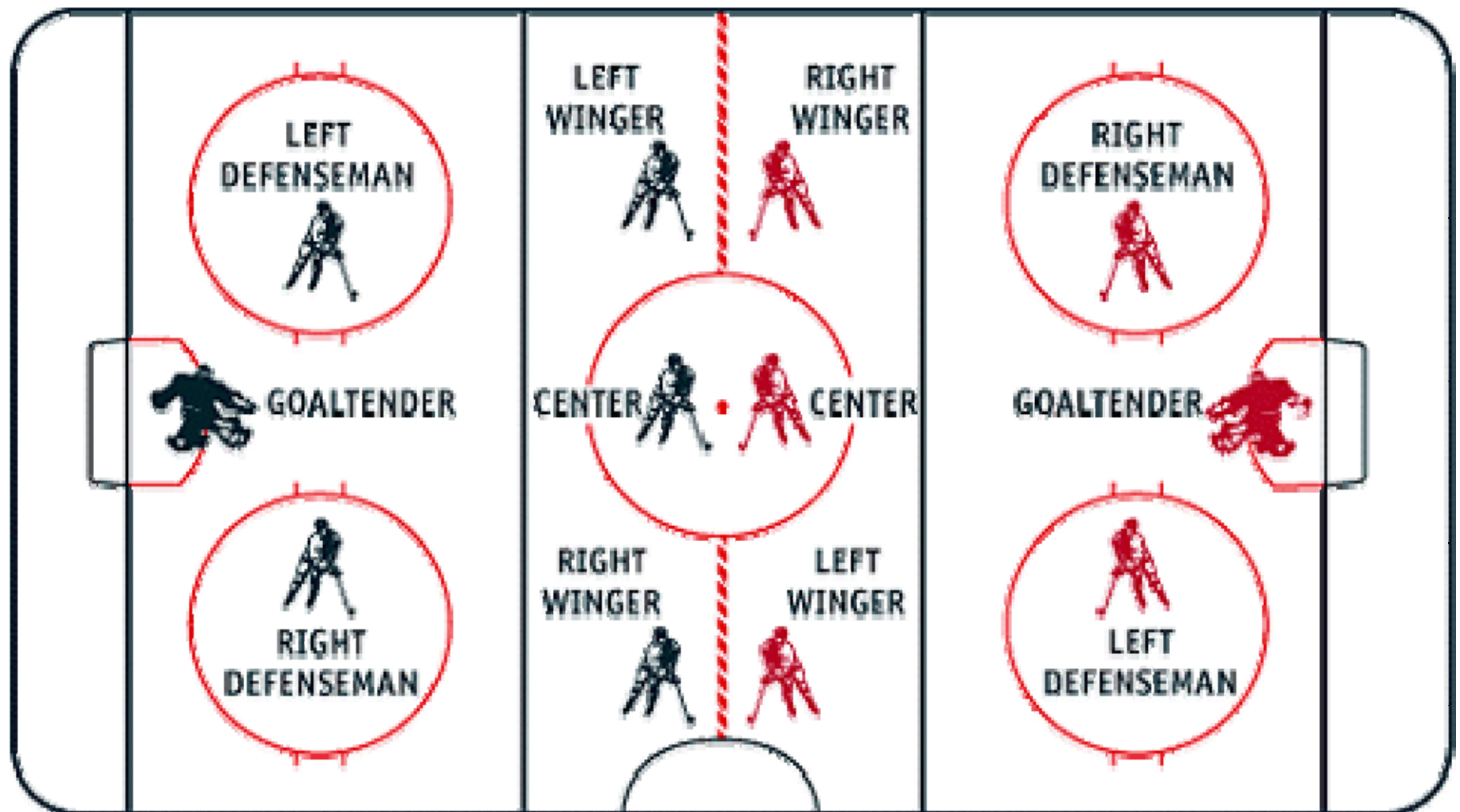
Features	
	Roads Closed
	Roads Open
	10 Minute Flight Intervals
	Atlas Page Number
	EMS Stations
	Communities
	TransCanada Highway
	Provincial Trunk Highways
	Railways
	Indian Reserves



System Status Management



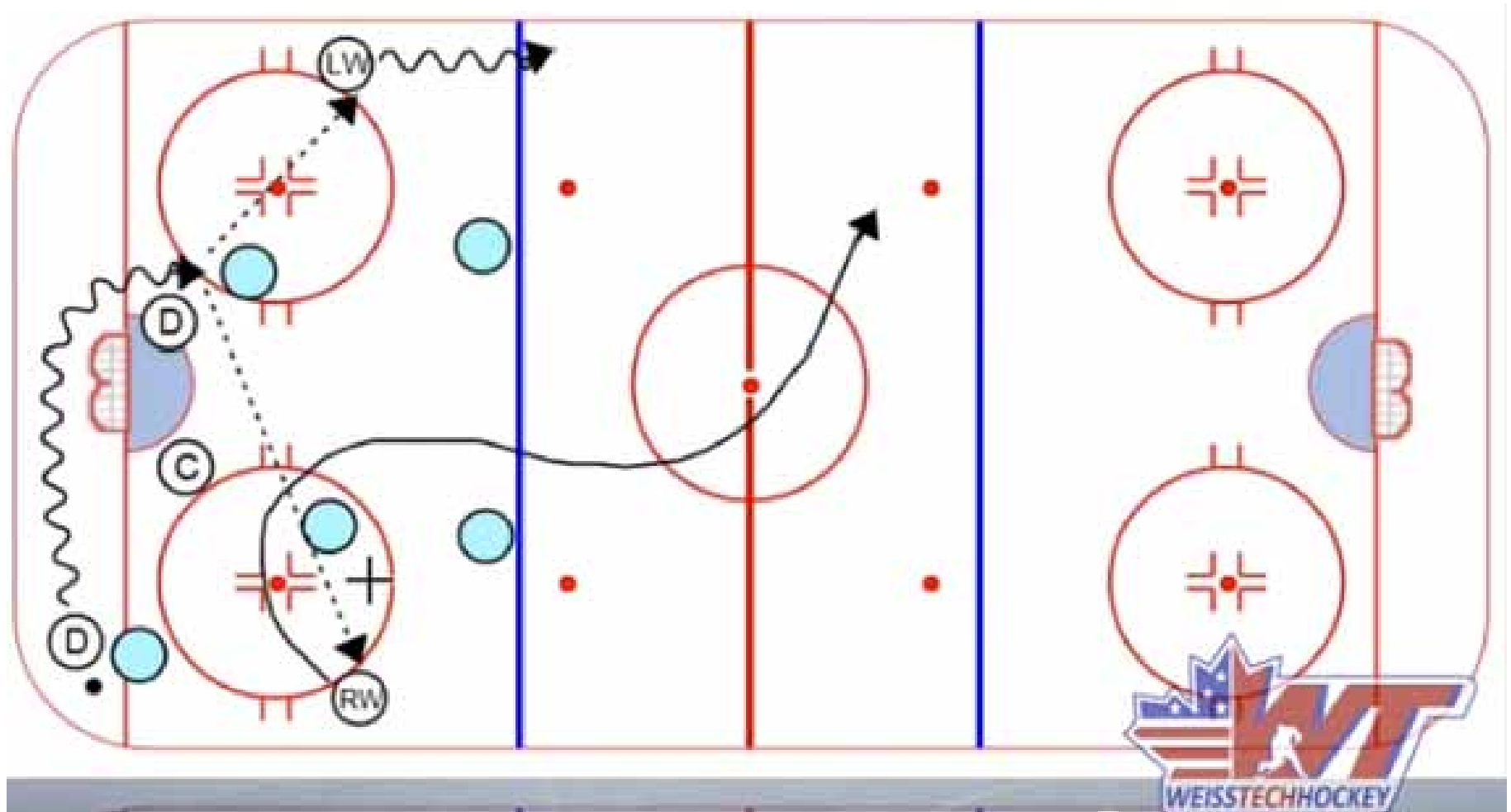
System Status Management



Penalty!



System Status Management



System Status Management

- 176 Ground Ambulances
- 24 Basic Air Ambulance Fixed Wing Aircraft
- 2 Lifeflight Jets
- 1 Rotary Wing Aircraft

New Tools

- Provincial System
- Dynamic Deployment
- Geo-posting



Provincial System



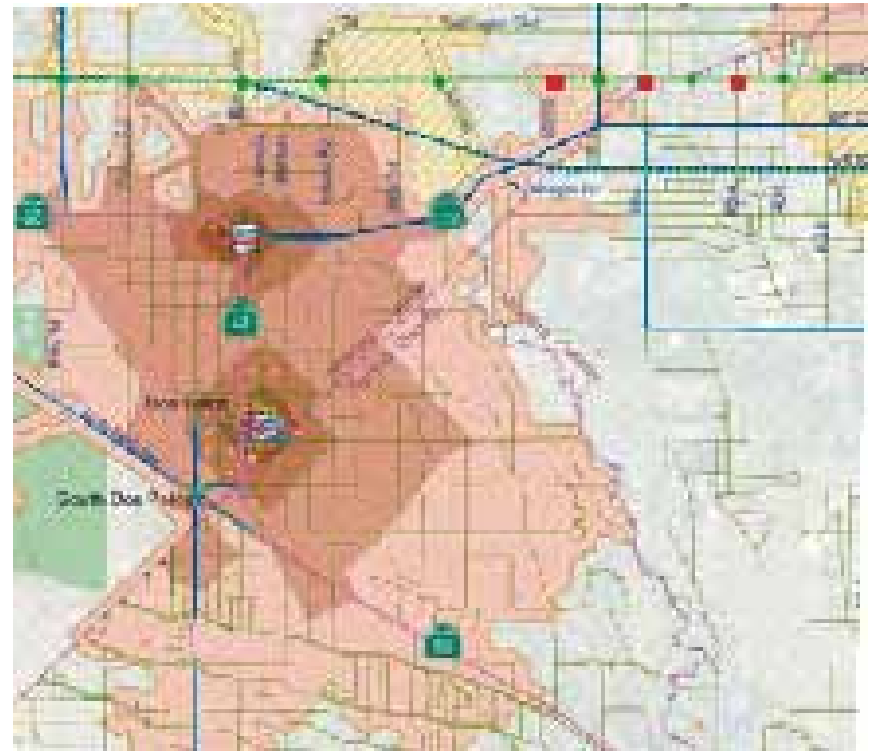
Consolidation

- Part of the review examined station infrastructure.



Why?

- Deployment Plan
 - Changes in demographics
 - Changes in populations



Why?

- Patient Safety
- Consistency in Response Time
- Predictability in Skill Levels
- Maintenance of Skill Levels



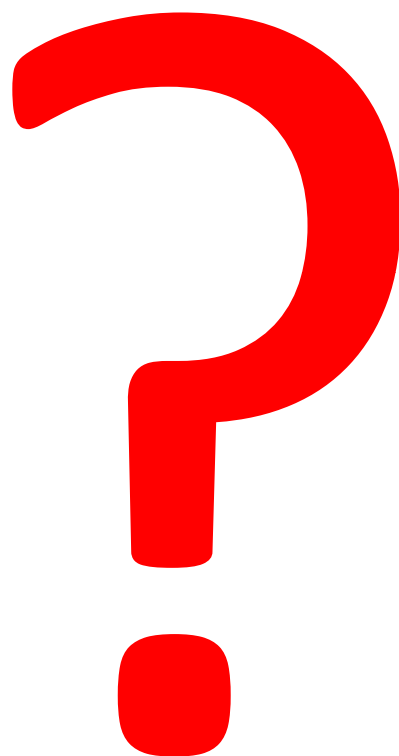
What is NOT!

- A budget cutting exercise
- A removal of services
- Creating two levels of care



Before Anything Happens

- Computer Modeling
- Community Engagement
 - Performance of Current vs. New
 - Community Feedback
- Capacity in Place
- Movement to New Deployment
- Public Reporting



Manitoba's EMS Review