



# Manitoba's Surface Water Management Strategy

.....

## AMM 16<sup>th</sup> Annual Convention

Dr. Rhonda McDougal

Director, Watersheds and Community Pastures

Manitoba Conservation and Water Stewardship

November 25<sup>th</sup>, 2014



Manitoba's **GREEN** Plan

**Manitoba**



# Surface Water Management Strategy

## “Moving To Sustainable Water Management”

1. Improving and protecting water quality
  2. Preparing for extreme events
  3. Coordination and awareness
- Key Component of TomorrowNow – Manitoba’s Green Plan



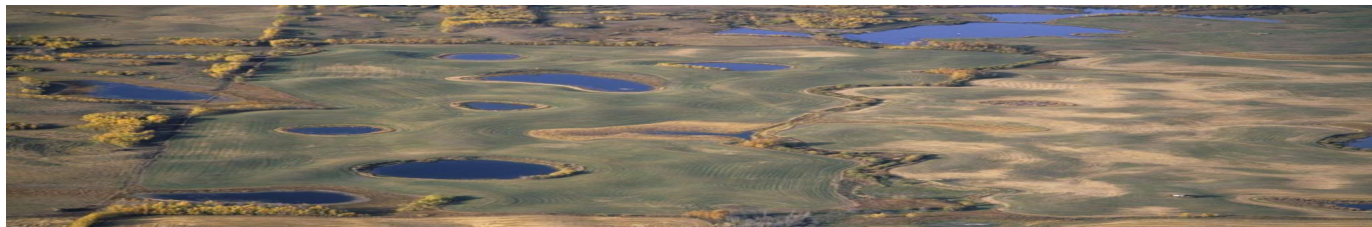
# Stakeholder Engagement

- Extensive stakeholder engagement process
- Kickoff Summit & Summit Two
- Written and web submissions
- Face to face meetings (50+ across province)
- Extensive Intergovernmental participation
- **Intent is to continue the discussion with stakeholders**



# Integrated Decision Making

- Multiple benefits for the environment and the economy
- Water retention and storage
  - Cumulative impacts need to be understood
  - Water quality and quantity are both considered
- Ecological Goods and Services
  - stewardship of nature is everyone's job



## ***Coordinating Action:*** **Water Management Directorate**

- **Surface Water Advisory Team**
  - Chaired by Manitoba Water Council – inaugural meetings upcoming
  - Provides a forum for on-going discussion and participation in surface water management
- **Interdepartmental Steering Group**
  - Goal is to foster collaboration and policy coherence for all planning activities relating to surface water management





## **Lake Friendly Stewards Alliance and the Lake Friendly Accord**

- Lake Friendly Accord signatories commit to:
  - “the shared goal of improving water quality by reducing nutrients in rivers and lakes through the engagement of all.”
  - Canada, Manitoba, and South Basin Mayors and Reeves were first to sign the Accord
  - All organizations and individuals can commit to Accord
- Lake Friendly Stewards Alliance is an inclusive forum to support communication and action





## ***Fifty Actions:*** **Towards Sustainable Drainage**

- Four key goals to the new regulatory approach:
  - Improve efficiency and shorten wait times
  - Add regulatory certainty, enforce on illegal actions
  - Protect wetlands with the goal of no-net loss, providing mitigation options where necessary
  - Move to a watershed-based planning framework
- New approach was developed by a stakeholder-based steering team
- Public consultation is underway



## ***Fifty Actions:* Basin-level and On-farm Water Retention and Storage**

- Water retention = Nutrient retention = Improved water quality
- Basin level assessments for flood preparedness  
- MIT
- On-farm water retention research – U of M
- Conservation Districts
  - Leaders in on-farm retention
  - Delivering EG&S incentives with Growing Forward 2 \$\$



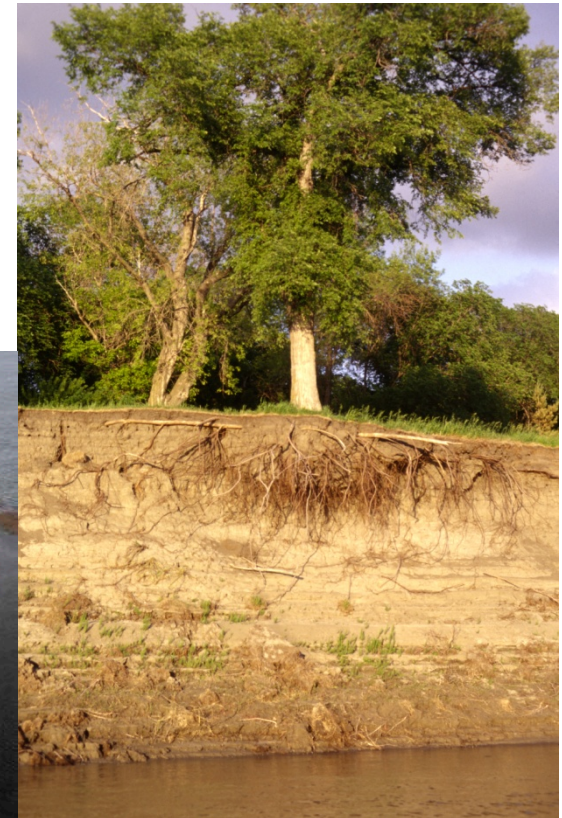
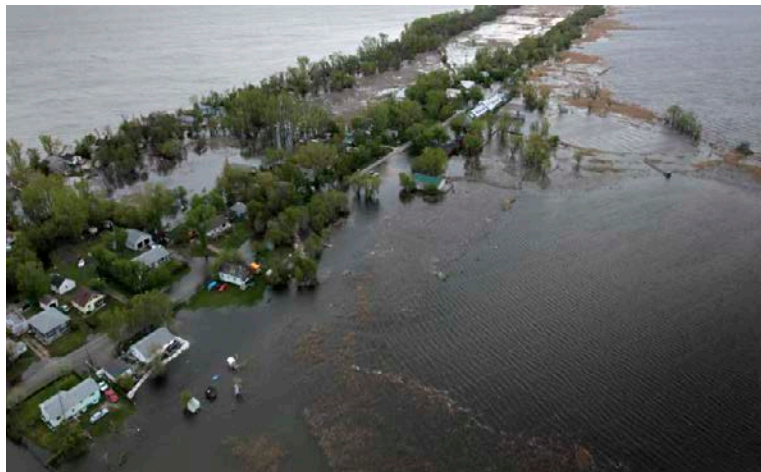
## ***Fifty Actions:*** **Flood and Drought Preparedness**

- Drought Management Strategy
  - Science-based with MB-based drought indicators
  - Enhanced resilience to drought and water scarcity
- Flood Preparedness
  - New Designated Flood Areas in vulnerable locations
  - Maintaining and improving flood protection works
  - Options for additional flood protection being assessed



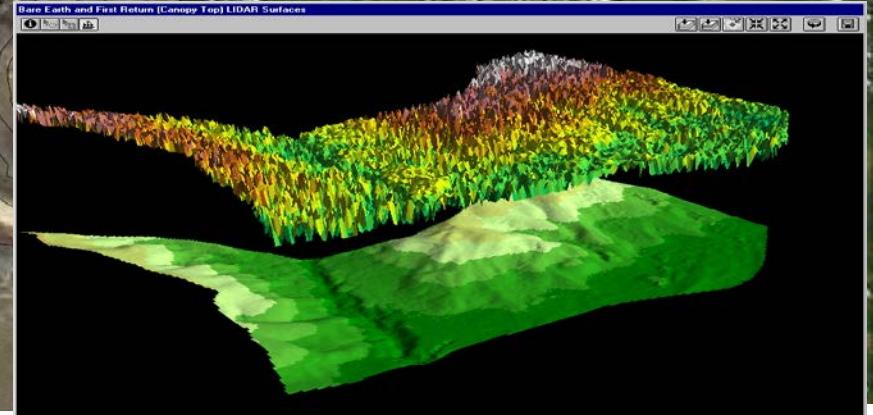
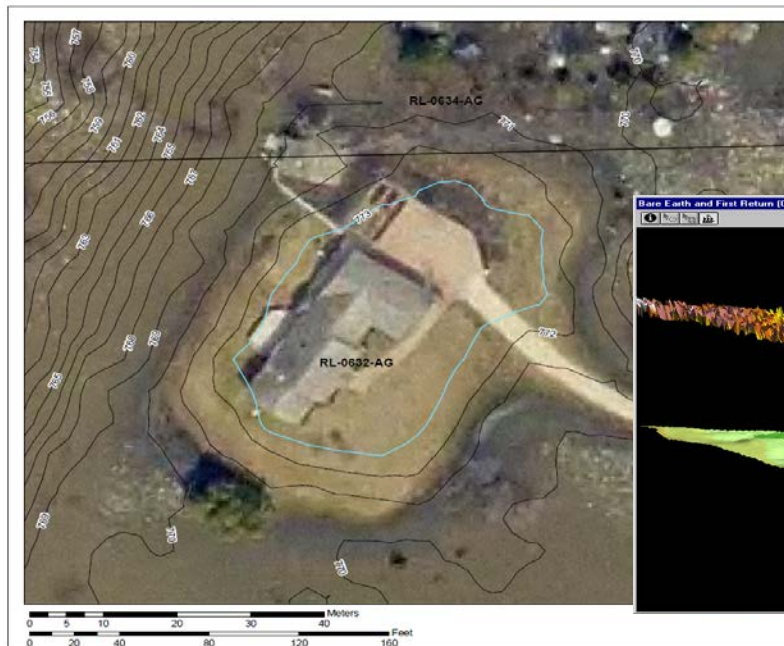
## ***Fifty Actions:*** **Lead by Example on Crown Lands**

- Water retention
- Restrict development on flood hazard lands and vulnerable lands



# ***Fifty Actions:*** **LiDAR and Geospatial Data**

- A new strategy to coordinate, organize, and share imagery being developed



## ***Fifty Actions:*** **Coordination, Cooperation and Awareness**

- Strive for inclusion, participation and communication
- Share local and traditional knowledge
- Foster collaborative research
- Share scientific data, information and technical advice
- Build partnerships



**Success is achieving a healthy  
“patchwork” for our living landscape**



**Success is providing environmental and community  
resilience for climate change adaptation**