



**Traffic Partner
Program**

AMM Traffic Partner Products 2021-2022

ATS Traffic Winnipeg Branch

982 Powell Avenue

Winnipeg, Manitoba R3H 0H6

T 1.204.233.1600 **TF** 1.877.953.1600

E winnipeg@atstraffic.ca

atstraffic.ca | Since 1966



Traffic Partner Products

Introduction

ATS Traffic has been ensuring safer roads since 1966, and now we've used our vast experiences to develop the Traffic Partner Program. The Traffic Partner program enables ATS to take the customer experience to a far greater level. Through Consultation, Education, Collaboration, and Communication, we can ensure a safer experience for all of our visitors in motion.

As a member of the Traffic Partner Program, we will work together to ensure the safety and success of all of your projects.

Member benefits include:

- Access to 15,000+ Products
- Traffic Partner Products
- Strategic Planning
- Product & Industry Education
- Access to the Traffic Partner Conference
- and so much more...

As an organization, we are honoured by the 21+ year relationship with the AMM and the ATS Traffic Group.

For more information or to find specific location contacts, please visit our website!



SHOP ONLINE

STORE.ATSTRAFFIC.CA | CREATE AN ACCOUNT TODAY



Sign Poster Preview



Winnipeg

T: 204.233.1600 F: 204.233.1906
TF: 880.661.7346



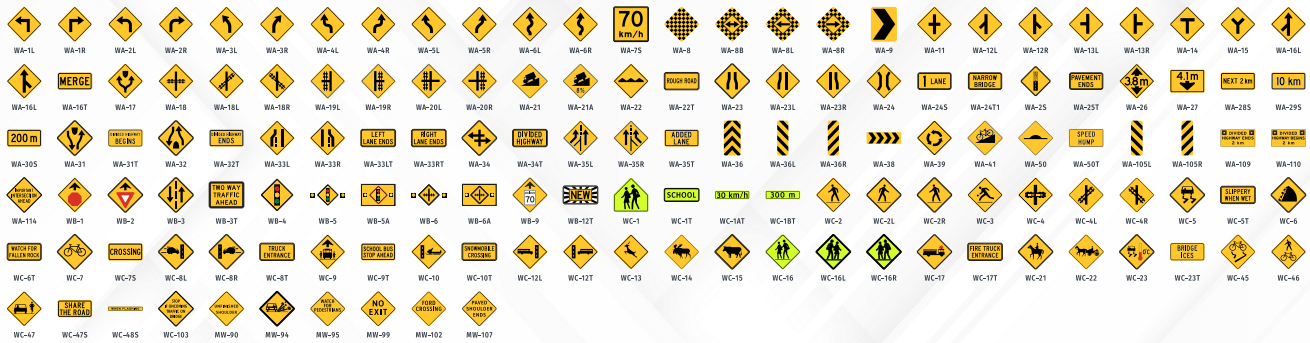
atstraffic.ca
Safety forward.



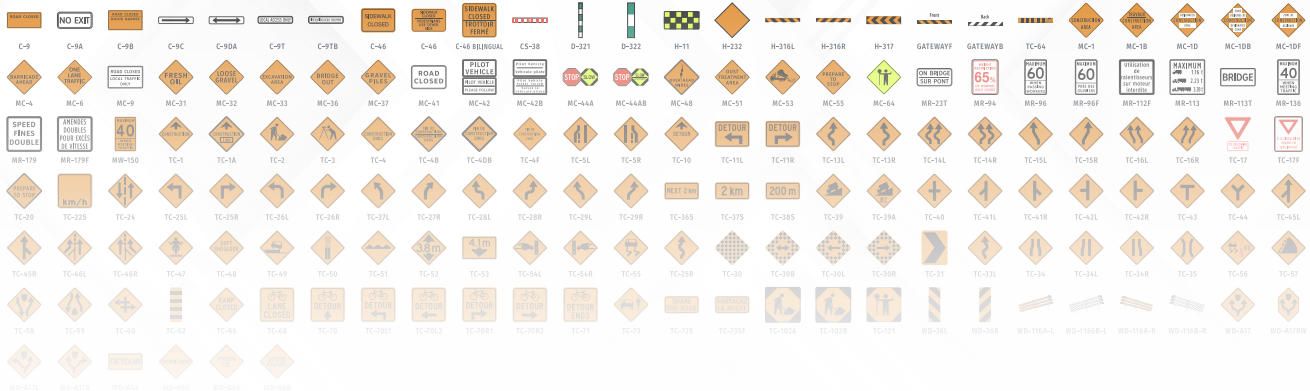
Regulatory



Warning



Construction



Guide & Information

*Please contact our team to view the full sign poster.

Top 50 MB Transportation Signs

Sign	Description	Sign Code	Sheeting Type	Width (cm)	Height (cm)
	Stop ATS SKU: 11110010	RA-1	HIP	75	75
	ARRET STOP ATS SKU: 19110448	MR-125	HIP	60	60
	Stop ATS SKU: 11110009	RA-1	HIP	60	60
	Stop ATS SKU: 11110007	RA-1	HIP	30	30
	3-Way Tab ATS SKU: 19110453	RA-1T3	HIP	60	30
	4-Way Tab ATS SKU: 19110455	RA-1T4	HIP	60	30
	Yield ATS SKU: 11110030	RA-2	HIP	75	60
	Yield ATS SKU: 11110024	RA-2	DG3	75	60
	Maximum 90 ATS SKU: 11110472	RB-1	HIP	75	60
	Maximum 80 ATS SKU: 11110450	RB-1	HIP	75	60
	Maximum 70 ATS SKU: 11110470	RB-1	HIP	75	60
	Maximum 60 ATS SKU: 11110449	RB-1	HIP	75	60
	Maximum 50 ATS SKU: 11110448	RB-1	HIP	75	60
	Maximum 40 ATS SKU: 11110466	RB-1	HIP	75	60
	Maximum 30 ATS SKU: 11110447	RB-1	HIP	75	60
	Maximum Speed Ahead (Content Variable) ATS SKU: 11110207	RB-5	HIP	60	75

Top 50 MB Transportation Signs

Sign	Description	Sign Code	Sheeting Type	Width (cm)	Height (cm)
	One Way ATS SKU: 11110092	RB-21	HIP	90	30
	Do Not Enter ATS SKU: 11110112	RB-23	HIP	60	60
	Do Not Pass (Passing Prohibited) ATS SKU: 11110141	RB-31	HIP	60	60
	Passing Permitted ATS SKU: 11110146	RB-32	HIP	60	60
	No Parking ATS SKU: 11110195	RB-51	HIP	30	30
	No Parking (specify arrows) ATS SKU: 11110296	RB-51	HIP	60	60
	No Parking with arrows ATS SKU: 19110486	RB-51	HIP	30	30
	No Parking (Specific Time Period) ATS SKU: 11110198	RB-52	HIP	30	45
	Parking Permitted (Content Variable) ATS SKU: 11110200	RB-53	IP	30	45
	Truck Route ATS SKU: 11110213	RB-61	HIP	60	60
	Truck Prohibited ATS SKU: 11110220	RB-62	HIP	60	60
	No Parking FIRE LANE ATS SKU: 19110487	RB-52FL	HIP	30	45
	No Parking Disabled Only ATS SKU: 11110324	RB-71	HIP	30	45
	Checkerboard - Solid ATS SKU: 11120156	WA-8	HIP	75	75
	Checkerboard - Double Arrow ATS SKU: 11120146	WA-8B	HIP	75	75
	Checkerboard - Left or Right ATS SKU: 11120164	RA-4L	HIP	75	75





Top 50 MB Transportation Signs

Sign	Description	Sign Code	Sheeting Type	Width (cm)	Height (cm)
	Bump ATS SKU: 19120347	WA-22	HIP	60	60
	Hazard Marker - Object on Left ATS SKU: 11120114	WA-36L	HIP	30	90
	Hazard Marker - Object on Right ATS SKU: 11120118	WA-36R	HIP	30	90
	Pedestrian Crosswalk - Right ATS SKU: 11110044	RA-4R	HIP	60	75
	Pedestrian Crosswalk - Left ATS SKU: 11110042	RA-4L	HIP	60	75
	School Ahead ATS SKU: 11120301	WC-1	DG3	60	60
	Playground Ahead ATS SKU: 11120259	WC-3	HIP	60	60

Sign Products

Sign	Description	Sign Code	Sheeting Type	Width (cm)	Height (cm)
	Men Working/Road Work ATS SKU: 19120682	TC-2	HIP	75	75
	Men Working/Road Work ATS SKU: 19120679	TC-2	DG3	75	75
	Men Working/Road Work ATS SKU: 19120798	TC-2	HIP	90	90
	Detour Ahead ATS SKU: 19120806	TC-10	HIP	90	90
	Construction Ends (Work Zone Ends) ATS SKU: 19120801	TC-4	HIP	90	90
	Construction Area ATS SKU: 19120780	MC-1	HIP	90	90
	Prepare to Stop ATS SKU: 19120782	MC-55	HIP	90	90
	Flood Waters ATS SKU: 19120790	MW-82	HIP	90	90
	Construction Ahead ATS SKU: 11120554	WD-101	HIP	75	75
	Loose Gravel ATS SKU: 11120596	WD-150	HIP	75	75
	Private Property No Trespassing ATS SKU: 19290003	GM-13	HIP	60	45
	No Exit ATS SKU: 11120159	WA-8B	HIP	45	45
	Watch for Children ATS SKU: 19290024	SM-12	HIP	60	60
	Road Closed Local Traffic Only ATS SKU: 19120770	MC-9	HIP	120	75
	Road Closed (Yellow, Org) ATS SKU: 19290021	SM-05	HIP	60	60
	Slow ATS SKU: 19290026	SM-20	HIP	60	60
	No Thru Traffic ATS SKU: 19110319	NS-52	HIP	45	60

Sign Products

Sign	Description	Sign Code	Sheeting Type	Width (cm)	Height (cm)
	No Through Road ATS SKU: 19290023	SM-10	HIP	60	60
	Reverse Turn Left ATS SKU: 11120128	WA-4L	HIP	60	60
	Reverse Turn Right ATS SKU: 11120130	WA-4R	HIP	60	60
	Sharp Curve Left ATS SKU: 11120078	WA-2L	HIP	60	60
	Sharp Curve Right ATS SKU: 11120080	WA-2L	HIP	60	60
	Curve Right ATS SKU: 11120125	WA-3R	HIP	60	60
	Curve Left ATS SKU: 11120122	WA-3L	HIP	60	60

*NOTES

1. Traffic Partner PRODUCTS - AMM Signs 2021 applies to all standard Manitoba Transportation 0.81" (2mm) flat sheet aluminum (AL1).
2. ATS is an authorized 3M sign fabricator and carries all applicable reflective sheeting warranties.
3. ATS is a proud member of the Association of Manitoba Municipalities (AMM).
4. HIP = High Intensity Prismatic Reflective Sheeting.
5. DG3 = 3M Diamond Grade Cubed Reflective Sheeting.

SIGN WARRANTY

A sign warranty against any abnormal deterioration of performance i.e. fading will apply to any ATS manufactured sign the warranty value of which will be calculated on a prorated life basis as indicated in the chart here. Excludes fluorescent diamond – grade.

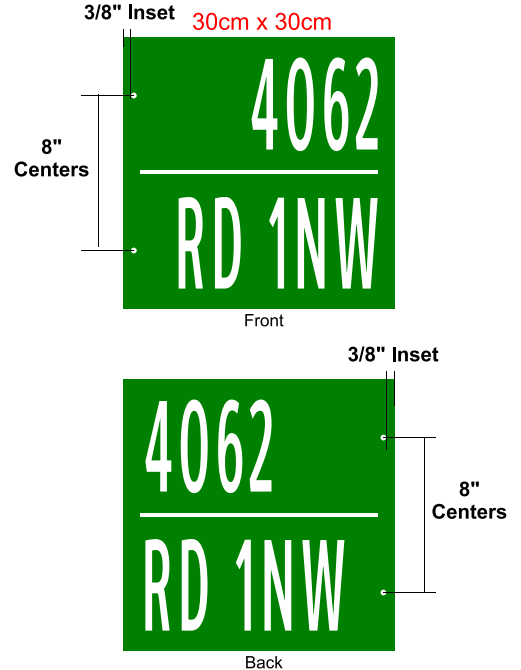
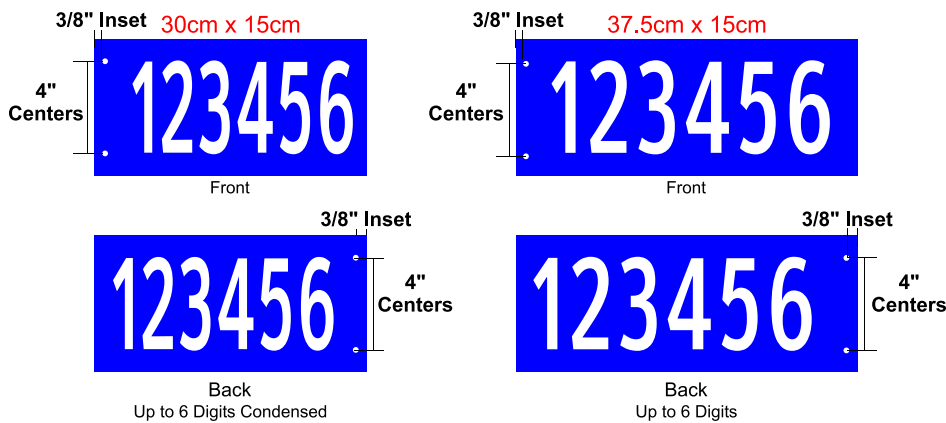
Sheeting	Warranty Life
HIP	10 Years
DG3	12 Years

MANITOBA

Hole Placements For Civic Address Flag Sign Mounts

Double Sided on Flat Sheet Aluminum

T-Post



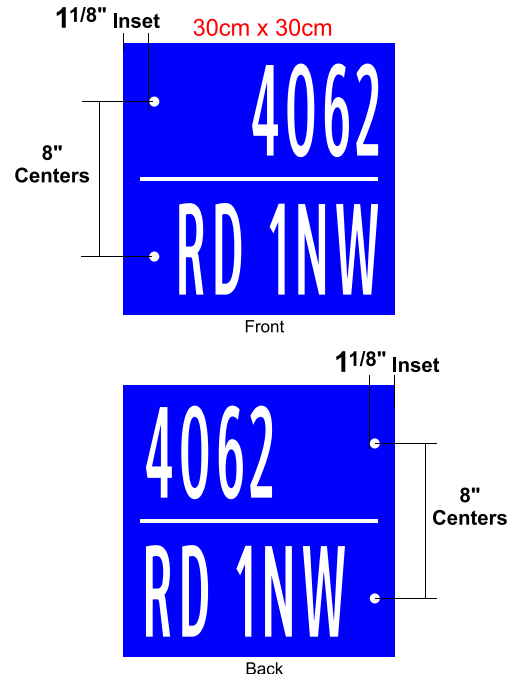
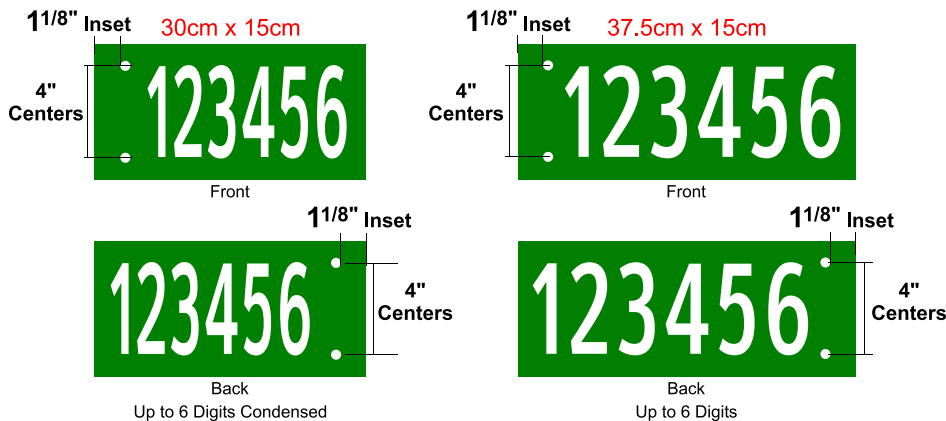
T-Post - 3/8" Holes

1.5" Post



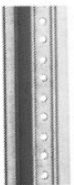
- | | | |
|-------------------------------------|-----------------------------------------|------------------------------------|
| <input type="checkbox"/> 30 x 15cm | <input type="checkbox"/> 37.5 x 15cm | <input type="checkbox"/> 30 x 30cm |
| <input type="checkbox"/> Blue | <input type="checkbox"/> Green | |
| <input type="checkbox"/> Engineer | <input type="checkbox"/> HIP | |
| <input type="checkbox"/> Hwy C Font | <input type="checkbox"/> Clearview Font | |

Pipeline Post



Pipeline-Post - 7/16" Holes

2.25" Post



- | | | |
|-------------------------------------|-----------------------------------------|------------------------------------|
| <input type="checkbox"/> 30 x 15cm | <input type="checkbox"/> 37.5 x 15cm | <input type="checkbox"/> 30 x 30cm |
| <input type="checkbox"/> Blue | <input type="checkbox"/> Green | |
| <input type="checkbox"/> Engineer | <input type="checkbox"/> HIP | |
| <input type="checkbox"/> Hwy C Font | <input type="checkbox"/> Clearview Font | |




atstraffic.ca 800.661.7346

Sign Hardware

Product	Description	Width (inches)	Height (inches)
	Dual Round or Square Post Top Mount Bracket ATS SKU: 22130073	5"	2 3/8"
	Wood Post Top Mount Bracket ATS SKU: 22130064	4"	4"
	Centre Mount Bracket (Round) sold as each ATS SKU: 22130065	2 3/8"	n/a
	Round Base Plate 8x8 Plate w Round Stub (2 3/8) ATS SKU: 21120120	8"	8"
	Square Base Plate 8x8 Plate with Square Stub (2") ATS SKU: 21120110	8"	8"
	Crossover Top Mount Bracket ATS SKU: 22130031	5"	n/a
	12" Top Mount Bracket for Round 2 3/8" ATS SKU: 22130042	12"	n/a
	12" Crossover Bracket ATS SKU: 22130032	12"	n/a

Sign Hardware (cont.)

Product	Description	Width (inches)	Height (inches)
	U Channel Anchor Post ATS SKU: 21110053	n/a	3.5'
	Square Anchor Post (2 1/4") ATS SKU: 21110109	n/a	3'
	U Flange Pipeline Post ATS SKU: 21110051	n/a	7'



Description	ATS SKU	Lengths
U Channel Post	21110042	6'
	21110045	8'
	21110062	10'
Round Post (2 3/8")	21110317	6'
	21110319	8'
	21110311	10'
	21110313	12'
Square Post (2")	21110143	6'
	21110142	8'
	21110138	10'
	21110139	12'

Message Signs



PCMS-320

The PCMS-320 is a mid-size full-matrix trailer-mounted portable changeable message sign. The PCMS-320 features the NTCIP-compliant V-Touch controller, Opti Power lens, Tilt-and-Rotate solar panels, JamLogic fleet management software (modem required) and optional Stealth Technology. This unit combines energy-efficient design and high-quality construction to provide the most reliable and cost-effective message signs on the market. The PCMS-320 has a compact design which makes it perfect to be used on highway construction projects where space is limited and in urban areas.



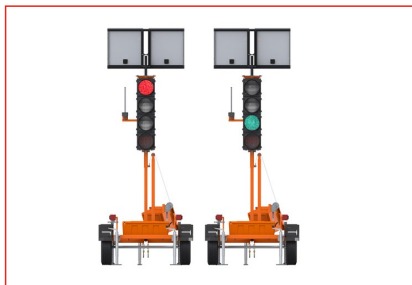
SP-715V PRO SERIES

The SP-715V PRO is a battery/solar powered trailer-mounted speed sign, with 3-digit display. It features our Stealth Technology, V-Touch SP controller, JamLogic® Fleet Management Software and state-of-the-art doppler radar. Our speed sign is designed to display real-time speed information to the motoring public, reducing speeds and providing a safer environment.



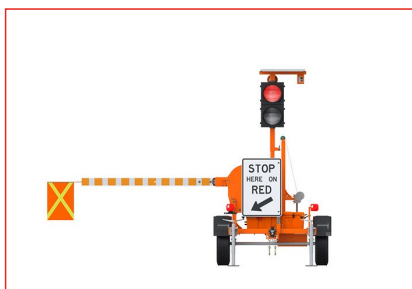
ST-4825 PRO SERIES

The ST-4825 Pro Series is a trailer-mounted arrowboard with 25 LED lamps. It features our innovative single-mast design, V-Switch controller, Stealth Technology and OptiBright lamps. The unit combines energy-efficient design and high-quality construction to provide the most reliable and cost-effective arrowboard on the market.



TLD-2312

Our solar-powered, mid-size trailer-mounted traffic lights are ideal for larger scale primary highway or bridge work. System comes standard with one 12" LED signal head on each trailer (set of 2). Synchronization is maintained through radio communications. Primary and secondary trailers may be positioned up to 1.6 km apart. On-site or remote programming.



FLAGGER-MAC

The Ver-Mac Flagger-Mac is a trailer mounted automated gate device that is designed for flagging operations. The Flagger-Mac system consists of two automated gate devices that is operated by a traffic control person using a wireless remote controller. This technology allows the person to fully control both devices from a safe location outside the work zone. The Flagger Mac is equipped with two 12-inch lamps, (1) red and (1) yellow, one adjustable gate with flag, V-Touch controller with wireless remote and stealth technology. The Flagger-Mac is designed to increase the safety of the traffic control flagger by minimizing their exposure to traffic.

**Multiple options & custom solutions available for rent or purchase - contact our team to learn more!*

Truck Mount Options



TM-548

FULL-MATRIX **TRUCK-MOUNTED** MESSAGE SIGN
48 X 78 INCH. (1207 X 1969 MM)
30 X 56 PIXELS



TM-3048

FULL-MATRIX **TRUCK-MOUNTED** MESSAGE SIGN
48 X 68 INCH. (1727 X 1219 MM)
30 X 56 PIXELS



TM-2056

FULL-MATRIX **TRUCK-MOUNTED** MESSAGE SIGN
35 X 78 INCH. (883 X 1969 MM)
20 X 56 PIXELS



TM-1056

FULL-MATRIX **TRUCK-MOUNTED** MESSAGE SIGN
22 X 78 INCH. (559 X 1969 MM)
10 X 56 PIXELS

I-SAFE 1 SL



Variable Message Sign (VMS) with alternating speed and text/images



The I-SAFE 1 sign links the speed information (green, orange or red displayed depending on driver's behavior) to a 768 LED matrix on which you can display personalized pictograms.

With its internal radar and removable battery, the I-SAFE 1 is mobile and easy to use. It can also be powered using a solar power kit or AC power.

Benefits

- Compact
- Light
- Predefined settings
- Calendar function (up to 4 periods/day)

User-Friendly

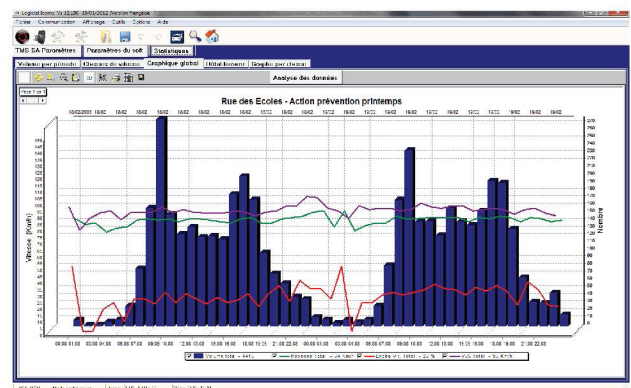
- Comprehensive software for data analysis
- Full standard kit including the fastening system

Multi-Purpose

- 1 product = 4 power possibilities (battery, solar, public lighting, mains power)
- Possibility to display 2 pictograms successively for one measure
- Anti-speeding record function
- Fully customizable settings

Features

- Vehicle activated traffic calming
- Amber LED or 3-LED display colours (green, orange, red)
- Personalized pictograms (or short messages)
- Set up using PC software and USB flash drive



HOUSTON RADAR

ARMADILLO TRACKER

Armadillo Tracker™ is a fully integrated multi-lane bidirectional traffic data gathering device. Featuring small size, no hassle field setup, non-intrusive sensing technology and long range wireless connectivity Armadillo Tracker ensures operational safety during installation and data retrieval.

FEATURES

- Patent pending true dual beam “speed trap” technology inherently provides accurate measurements without the need for in situ calibration.
- World’s lowest power usage highly integrated multi-lane traffic measurement radar. At 0.85 Watts SpeedLane requires 10X less power than competing products.
- FCC and CE listed for full 250MHz operation to suit variety of application requirements.
- Mounts on the side of the road for non-intrusive traffic data collection and works in all weather and lighting conditions.
- Simultaneously measures all vehicles in 8 user defined lanes.
- All traffic measurements are on per-vehicle, per-lane basis, available in real-time and stored in device memory.
- Lane-by-lane vehicle counts, length based class, average and 85th percentile speeds, occupancy, headway and gap measurements.
- Companion Windows application provides intuitive GUI to set all configuration parameters, display real time plots of targets and view snapshots & streaming HD video.
- Built-in long range Class I 2.1+EDR Bluetooth, RS232/RS485 serial ports and Ethernet.
- 512 Mbytes of on-board storage plus µSD card expansion slot.
- Built-in 1.3MP HD video camera for sighting makes setup a snap and allows convenient remote monitoring of traffic.
- Powerful SQL based query interface for historical data.
- Optional cloud based server to aggregate data from multiple devices provides quick and seamless dashboard view.
- Optional built-in UPS with rechargeable battery keeps unit running for over 24hrs on loss of external power.



Contact us today for more information.

Edmonton | Calgary | Langley | Regina | Saskatoon | Winnipeg

TF 800.661.7346 E info@atstraffic.ca
atstraffic.ca | Since 1966



CARMANAH

R920-E

RECTANGULAR RAPID FLASHING BEACON

Pedestrian-actuated warning system for uncontrolled marked crosswalks; The R920 is the benchmark for Rectangular Rapid Flashing Beacons.

RRFBs have been found to provide vehicle yielding rates between 72 and 96 percent for crosswalk applications, including 4 lane roadways.

MOUNTING OPTIONS

2.0" - 2.5" Perforated
Square Post Mount



2.38" - 2.88" Diameter
Round Post Mount



4.0" - 4.5" Diameter



Side Post Mount



FEATURES

- Ultra-efficient optical and Energy Management System (EMS)
- Compact design to simplify installation
- Proven technology platform
- Exceeds FHWA standards
- Superior Design and Technology:
 - The R920 utilizes a self-contained solar engine integrating the energy management system with an on-board user interface, housed in a compact enclosure together with the batteries and solar panel.
 - In low light conditions, the ambient auto-adjust option provides over-lighting protection and system efficiency, while still meeting MUTCD light intensity requirements.



Contact us today for more information.

Edmonton | Calgary | Langley | Kamloops | Regina | Saskatoon | Winnipeg

TF 800.661.7346 E info@atstraffic.ca
atstraffic.ca | Since 1966



CARMANAH

R247-E

SOLAR FLASHING BEACON

24 Hour Flashing Beacon for Warning Signs and Stop Signs.

The R247-E is the standard for 24 Hour Flashing Beacons. The ultra-efficient solar technology delivers high intensity light output in a compact, lightweight, and easy to install solar engine.

FEATURES

- Industry leading light output
- Available with Red or Amber beacons
- Proven technology platform
- MUTCD Compliant

High Intensity Light Output:

- The R247-E provides a high intensity 24 hour flashing beacon that provides year round performance in the most challenging solar conditions. An ultra-efficient energy management system coupled with the latest LED technology delivers a high intensity, continuous flash output.

Advanced User-Interface:

- The R247-E features an on-board user interface and display that provides quick configuration and status monitoring.



Contact us today for more information.

Edmonton | Calgary | Langley | Kamloops | Regina | Saskatoon | Winnipeg

TF 800.661.7346 E info@atstraffic.ca
atstraffic.ca | Since 1966

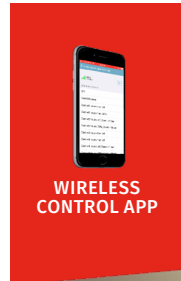


FIRST LIGHT TECHNOLOGIES

SCL2 SERIES

SOLAR LED INTEGRATED COMMERCIAL AREA LIGHT

The SCL2 Series solar LED luminaire is a great fit for commercial, parking lot, recreational bikeway/pathway and public space lighting applications. The self-contained, unobtrusive design integrates its solar power, adaptive control and LED technologies into a compact and efficient form. With robust construction, and unequalled performance the SCL2 series is an excellent fit wherever cost effective, full cutoff lighting is required.



BENEFITS

- Cost effective design ships fully assembled and installs in minutes
- Smart Connect provides wireless control & communication with your light
- Low installation cost and minimal site impact with no trenching, cabling or wiring Minimal ongoing costs with no electrical bills or bulbs to change
- Operates entirely independent from the grid and is immune to power outages
- A sustainable choice without recurring carbon emissions

All of our solar powered lights are enabled by our innovative Solar Lighting Controller (SLC). The SLC in each light is “self-learning” and allows the lights to predictively adapt to their surroundings, providing a level of lighting performance and reliability unavailable in other solar lighting products.

GROUND SCREW

For 16'-20' poles

Easy Install with screw pile



Our ground screw foundations use the natural compression of the earth for strength and stability.

Unlike concrete foundations which disturb the site with excavation and require waiting for concrete delivery and curing time, we install ground anchors in minutes with minimal site disturbance, at a lower cost.

When used with solar lighting, the need for wiring trenches is completely eliminated.

Contact us today for more information.

Edmonton | Calgary | Langley | Kamloops | Regina | Saskatoon | Winnipeg

TF 800.661.7346 E info@atstraffic.ca
atstraffic.ca | Since 1966



FIRST LIGHT TECHNOLOGIES

SOLAR LED BOLLARDS

PLB

Architectural Solar Illuminated Bollard

- Contemporary styling
- Cutoff lighting for pathways and outdoor spaces
- Provides effective ground-level illumination

WLB

Architectural Solar Illuminated Wayfinding Bollard

- Familiar louvred design
- Wayfinding/delineation applications
- Highly-visible fixture adds style to any location

PLB-AC

High-Efficiency Illuminated Bollard

- Wired version of our solar PLB
- Full cutoff lighting for AC powered applications
- Ideal for new and retrofit AC applications



GROUND SCREW

For 36" LED Bollard

Easy Install with screw pile



Our ground screw foundations use the natural compression of the earth for strength and stability.

Unlike concrete foundations which disturb the site with excavation and require waiting for concrete delivery and curing time, we install ground anchors in minutes with minimal site disturbance, at a lower cost.

When used with solar lighting, the need for wiring trenches is completely eliminated.

FEATURES & BENEFITS

- **Wire Free Lighting**
No electrical design or trenching required
- **Save Time & Money**
Our solar lights cost 50% less than wired lighting and only take 15 minutes to install
- **Lighting All Night Every Night**
You can count on our lights to deliver effective light year without maintenance
- **Great Day Time Appearance**
Our solar lights look like lights and our designs complement your project aesthetic with a low chance of vandalism or theft

Contact us today for more information.

Edmonton | Calgary | Langley | Kamloops | Regina | Saskatoon | Winnipeg

TF 800.661.7346 E info@atstraffic.ca
atstraffic.ca | Since 1966





CASE STUDY: CITY OF NORTH BATTLEFORD

Solar Outdoor Lighting Solution



OVERVIEW

North Battleford is the seventh largest city in Saskatchewan, located in the west-central region of the province. It is among the fastest growing Saskatchewan communities, with a population of about 14,000 residents.

BACKGROUND

In 2014, the City of North Battleford developed a Community Safety Strategy to address real and perceived safety for residents in response to increased crime. They utilized a 5-pronged approach to address criminal activity and factors contributing to safety concerns. As part of an effort to prevent and suppress crime, City planners used Crime Prevention Through Environmental Design (CPTED) as a framework for improving the safety of public spaces in the downtown core.

North Battleford has faced some unique challenges when it comes to safety in the downtown core. The City focused on increasing the amount of lighting and enhancing the overall downtown aesthetic to enhance the environment. By increasing safety through design, they hoped to encourage legitimate users in public spaces while deterring criminal activity.

The goal: to create a more inviting, active area for the public to enjoy.

CHALLENGE

In addition to enhancing lighting in public spaces for the purposes of reducing and preventing crime, the City of North Battleford was also looking for a style that suited their modern aesthetic and provided some cost-savings. That's where ATS Traffic came in. In 2017, the City reached out to our Saskatoon team looking for a better outdoor decorative lighting solution for their community. With no private power providers in their area, North Battleford relies on the Provincial Crown Company for lighting. There are few options available and many have been established throughout the province. The City was looking for a design that would set them apart - on top of offering increased power and lowering their costs. That is why North Battleford selected First Light Technologies' **SCL2** and **PLB Solar Bollard**.

SOLUTION

Through consultation with ATS Traffic and First Light Technologies, the City of North Battleford selected the SCL2 Series Solar LED Integrated Commercial Area Light and PLB Architectural Solar Illuminated Bollard.

2017

ATS Traffic installed 22 Commercial Area Lights and 26 Illuminated Bollards on city streets.

2018

21 more Commercial Area Lights were added, along with 23 Illuminated Bollards.

2019

While quantities are still TBD, ATS Traffic will install more of both technologies for the City.

CRIME PREVENTION THROUGH ENVIRONMENTAL DESIGN (CPTED)

Adding additional lighting provides users of a built environment the opportunity to better perceive their space and make more informed decisions. Increased lighting generally helps people to feel safer and reduces the opportunity for crime to go unnoticed.

When the built environment provides appropriate lighting, the level of crime and terror may be diminished because of **increased natural surveillance** and **increased perception of security**. Lighting can also enable and improve the detection, identification and capture of potential criminals.



SOLUTION



SCL2

The SCL2 Series Solar LED luminaire is often used for commercial, parking lot, recreational bike-way/pathway and public space lighting applications. The self-contained, unobtrusive design integrates its solar power, adaptive control and LED technologies into a compact and efficient form. With robust construction and high performance, the SCL2 series is an excellent fit wherever cost effective, full cutoff lighting is required.

PLB

The PLB Architectural Solar Illuminated Bollard provides cutoff lighting for pathways and outdoor spaces. With contemporary styling, these self-contained fixtures do not require electrical design, wiring or trenching and only take about 15 minutes to install using a screw pile.



The long-term cost savings for municipalities and their tax payers with utilizing solar technology can be substantial. On average, solar lights cost about **50% less** to run than wired lighting. For communities that are attempting to decrease crime rates and increase safety for local residents, First Light Technologies offers a cost-effective option with a modern aesthetic.

OUTCOME

Overall, the City of North Battleford has been extremely pleased with the outcome of their outdoor lighting project. Many of the community's residents are in favour of solar energy and are excited to see this technology being used on their streets. The sleek, modern style of the Luminaire poles and bollards give the downtown core an enhanced aesthetic, while increasing visibility and the perception of safety.

FEEDBACK

"My experience with ATS Traffic has been very positive. The people are always accommodating and treat North Battleford as a very important client. I have never been given the impression we are not a priority – as can often happen with other companies knowing we are a smaller centre. The caliber of work, timely responses, quality products and overall customer service is exceptional. We're already looking at doing some future projects with ATS Traffic and First Light Technologies within the City."

Ryan MacKrell, R.P.P., M.C.I.P.
City Planner – City of North Battleford

OPTAMARK®

PERFORMED THERMOPLASTIC

OptaMark® is a heavy-duty intersection grade preformed thermoplastic pavement marking with proven durability on a wide variety of pavement surfaces. No preheating and heat indents indicate material reached molten state. Quick and easy to apply, the interconnected material reduces layout time during application.



PLASTIROUTE™

COLD PLASTIC ROAD MARKING MATERIAL

Cold plastic is suitable for high traffic requirements and all climates. The application of PlastiRoute™ products is very flexible. You can apply the products with ordinary tools like a trowel, scraper, draw-box or roller as well as non-electric hand-driven machines. If you choose to apply the cold plastics by machine a wide variety of road marking patterns and lines are available.



CHIPFILL™

HOT-APPLIED SURFACE DEFECT REPAIR SYSTEM

When heated, the binders in the thermoplastic bond to the bitumen in the asphalt. This makes ChipFill™ a durable and cost-effective solution as it prevents damages from becoming bigger and more expensive to repair. ChipFill™ can be used for fixing cobblestones and preventing erosion and growth of weeds between them.



Contact us today for more information.

Edmonton | Calgary | Langley | Kamloops | Regina | Saskatoon | Winnipeg

TF 800.661.7346 E info@atstraffic.ca
atstraffic.ca | Since 1966



COMPANY PRODUCT LINE CARD

Rhythm Engineering invents, builds, and supports tools and technology that empower traffic professionals to save motorists' lives, money, and the environment.

Rhythm Engineering holds 5 patents and continues to invent new and disruptive products that **revolutionize the industry**.



In|Sync

Adaptive
Traffic Signal System

In|Sync is the only **real-time adaptive traffic signal** timing technology on the market. It uses a keen sense of vision and a powerful brain to process real-time data. In|Sync adapts to changing traffic flow and automatically synchronizes traffic signals. Independent studies prove that In|Sync improves travel time, number of stops, delay better than any other solution in the market. Every day, In|Sync **impacts about 54,000,000 motorists** throughout North America in a positive way.



code|GREEN

Signal Timing
Technology Using AI

code|GREEN is the first-ever complete **signal timing and operations solution**. It seamlessly integrates accurate data collection, timing plan generation, and deployment using a single software system. Armed with real-time data, traffic engineers can create highly accurate timing plans for each day of the week.



CYCLOPS

AI Vehicle and
Pedestrian Detection

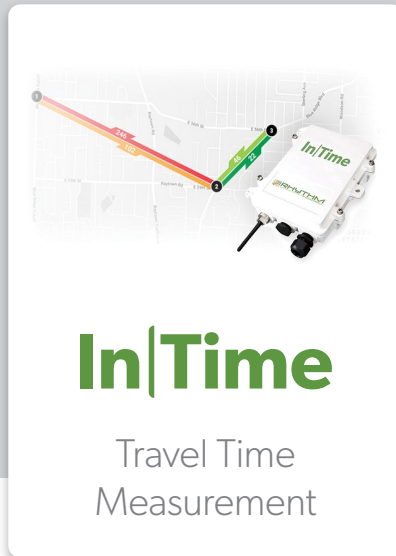
Cyclops is a video-based **Vehicle and Pedestrian Recognition Technology**. It uses the same breakthrough Artificial Intelligence technology that powers autonomous vehicles operations. Cyclops' unprecedented accuracy allows you to make data-driven decisions about your traffic management. This technology provides clear and precise data, 24/7/365.

Contact us today for more information.

Edmonton | Calgary | Langley | Kamloops | Regina | Saskatoon | Winnipeg

TF 800.661.7346 E info@atstraffic.ca
atstraffic.ca | Since 1966



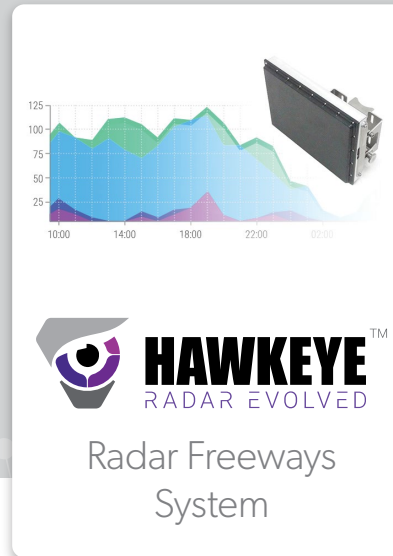


In|Time

Travel Time
Measurement

In|Time is a **Wi-Fi based** travel time data collection device to conduct health-checks for arterials and highways continuously in real-time. **In|Time** delivers precise data at a very low investment. The **In|Time** Travel-Time Measurement solution measures real-time travel time data along a corridor or an arterial by capturing MAC addresses of Wi-Fi devices in vehicles as they pass.

intime.rhythmtraffic.com



HAWKEYETM RADAR EVOLVED

Radar Freeways
System

Hawkeye is a hyper-accurate radar technology that collects and visualizes high-resolution data for freeways. It delivers nearly 100% vehicle detection accuracy and road visibility through a powerful data analytics software that provides 30+ freeway performance metrics. **Hawkeye** Radar Freeways System is ideal for identifying bottlenecks in real time, reliably registering wrong-way driving, congestion and early incident details.

hawkeyeradar.com

TRANSFORM YOUR CITY INTO A SMART CITY

//

It's real-time! When you have an influx of traffic, it takes care of that traffic immediately!"

Jim Dickinson, PE
Principal Traffic Engineer |
West des Moines, IA

//

The installation of these new adaptive traffic signals means less time spent on the road and more time for commuters to spend with their families. Residents are catching more green lights than ever before and the community is thrilled about it."

Lorie Zapf
City Council Member | San Diego, CA

Contact us today for more information.

Edmonton | Calgary | Langley | Kamloops | Regina | Saskatoon | Winnipeg

TF 800.661.7346 E info@atstraffic.ca
atstraffic.ca | Since 1966





Creating smarter and safer TRAFFIC

Turn any camera into traffic sensor, get valuable traffic data from any video.

Try DataFromSky LIGHT for free, get short sample to be convinced!

- Up to **16 object classes** supported
- Supports up to **8k videos**
- **Valuable video data** – analyze every millisecond, display the analysis output in the video
- Data available **offline**: download the results and SW to your PC and you will never lose the data
- No need of special or expensive hardware

 www.datafromsky.com

Analyzing traffic data has never been easier



record the video using any type of camera, even phone



upload the video to DFS LIGHT platform



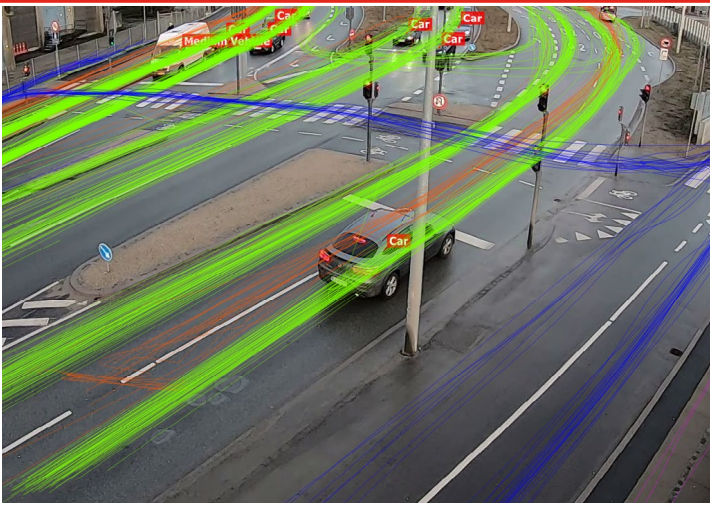
Take a short break, have a coffee, then download the results from your DFS LIGHT account



Open the results in our desktop application and do the magic

Why DataFromsky LIGHT?

- **Comprehensive traffic data in a few clicks**
 - Origin-destination matrix, turn-movements
 - Gate counting
 - Object classification
 - Overall statistics
 - Trajectories
 - Various export options
 - ...and much more!
- Best tracking algorithms (success >98 %)
- Extremely cost-efficient - the more videos you analyze, the better price.
- Fast turnaround time



DFS Light

Unlimited traffic data

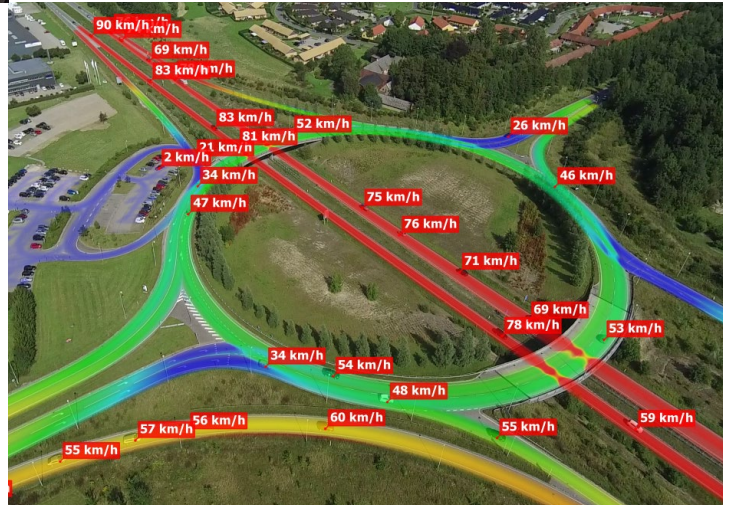
Become a real traffic expert thanks to DFS Light cloud service: traffic counting, OD-matrix, turn counts, statistics, trajectories, various exports and visualizations and much more just in a few clicks.

Automated video analysis of traffic from any ground-based video source.

DFS Aerial

AI eye in the sky

Need super accurate data from drone footage? Send your video for DataFromSky Aerial Analysis - the most advanced technology for traffic monitoring at the microscopic level. Trajectory & GPS position, speeds, acceleration, Tg&Tf calculation, capacity estimation, Time to Collision, Safety analysis and road user behavior patterns - in-depth traffic study thanks to DFS Aerial.



Traffic Detector

Real-time traffic monitoring

Do you need real-time 24/7 counts and statistics of traffic? Traffic Detector is the right solution: embedded system for real-time traffic analysis from fixed cameras! Complex OD-matrix, turning movement counts, open API and detection of 6 classes provided by the most advanced traffic AI. Use TrafficDetector for adaptive control of traffic lights.

Parking Detection

Smart parking with artificial intelligence

PD system monitors the actual occupancy of a parking lot, provides its managers with valuable information about the daily turnaround and navigates drivers all the way to an empty parking spot. Parking rule violation, parking time exceeded, parking payment management - PD can help with all of that and much more!



Return Policy

Unfortunately, circumstances can arise where product needs to be returned. This document provides a procedure for the return of materials that do not meet order requirements (i.e. damaged, shortages of product, wrong product or incorrect item, and/or defective products). In addition, this document will provide a procedure for return of materials other than damaged, shortages, wrong shipment or incorrect item, and defective products. ATS Traffic accepts returned goods for the following reasons, timeframe and under the associated policy:

Reasons for Returned Materials	Reporting Timeframe	Policy
Damaged goods	<p>All damaged materials received by an AAMDC customer must be reported to ATS Traffic within two (2) business days (48 hours) of delivery.</p> <p>Concealed damages must be reported within ten (10) business days.</p>	<p>Upon delivery, visible damages must be noted on the Bill of Lading, signature of person receiving the damaged materials, and the carrier driver's signature.</p> <p>Damages that are not reported on Bill of Lading must be held until an inspection by the carrier is completed and a report is issued. Customer may request an inspection of damages. ATS Traffic will contact the delivery carrier for an inspection. Once the carrier report is issued, ATS Traffic Customer Service will issue an authorization to return product. A copy of the inspection report and a Return Materials Authorization (RMA) must accompany the returned product. (The procedure to request an RMA is seen in section 1 below.) Whenever possible, a picture of the damaged materials should accompany the inspection report.</p> <p>Please note: No credit will be issued without report showing damages on Bill of Lading at the time of delivery or on a carrier's report.</p>
Shortage	<p>All visible shortages received by the customer must be reported to ATS Traffic within two (2) business days (48 hours) of delivery.</p> <p>Concealed shortages must be reported within ten (10) business days.</p>	<p>Upon delivery, quantity discrepancies must be noted on the Bill of Lading, accompanied with signature of person receiving shipment and the carrier driver's signature. Claims made after the recommended timeframes will not be honored.</p> <p>Please note: No credit will be issued unless visible shortage is noted on Bill of Lading at the time of delivery.</p>
Wrong shipment or incorrect items	All wrong shipments or incorrect items must be reported to ATS Traffic Customer Service within two (2) business days (48 hours) of delivery.	ATS Customer Service will arrange for pick-up of materials from customer. All incorrect items will be corrected to customer specifications.
Defective Products	Defective products must be reported to ATS Traffic Customer Service w	ATS Customer Service will arrange for pick-up of materials from customer. All defective materials will be inspected and actioned through Sales Support for corrective action or credit.
Damaged Goods	A returned product other than damages, shortage, wrong shipment or incorrect items must be reported to ATS Traffic within ten (10) business days. In addition, product must be received at the issuing branch within thirty (30) days. After thirty (30) days no product will be accepted.	<p>Once notification is reported to ATS Traffic, we will issue an authorization to return the product (RMA). Returned materials are subject to a fifteen percent (15%) restocking fee.</p> <p>A twenty five percent (25%) restocking fee will be charged on returned special order materials.</p> <p>ATS does not offer any credit for custom ordered products.</p> <p>Note: restocking fees do not apply if the item is defective or damaged, or customer received the wrong shipment.</p>

Return Materials Authorization (RMA) Process

1) Requesting a Return Materials Authorization (RMA):

- To request a RMA number, please contact your Sales Support representative indicated on the following page and obtain a Return Authorization Number and shipping instructions or fax a request for the return item. Please note: When faxing a request for return item, provide a contact name, fax and telephone number, product description, quantity, a copy of the packing list and or invoice, and reason for the return. All authorized returns must be shipped to originating branch of ATS Traffic, unless otherwise instructed by your ATS Customer Representative.

Sales & Customer Service Contact Information



E info@atstraffic.ca
atstraffic.ca | Since 1966

Timely service and customer satisfaction are the hallmark of ATS culture. If you experience a quality or service issue, please contact your Account Manager or sales support team by corresponding region. These individuals have immediate access to the customer service information and resources to resolve most issues quickly and efficiently.

If they are unable to do so, they will escalate the issue to senior management who will engage the required additional resources to expedite a solution.

Key Contact

Jill Hawryluk – Account Manager

982 Powell Avenue, Winnipeg, MB R3H 0H6

C 204.233.1600 **F** 204.793.3401

E jillh@atstraffic.ca

Winnipeg Location

ATS Traffic - Winnipeg

982 Powell Avenue, Winnipeg, MB R3H 0H6

T 204.233.1600 **TF** 1.877.953.1600

E winnipeg@atstraffic.ca

Check out our [website](http://atstraffic.ca) for locations, product information and more!

Safety forward.



atstraffic.ca | Since 1966