



Green Manitoba

An Agency of the Manitoba Government

***Manitoba's Waste Reduction
and Recycling Support (WRARS)
Levy***

*AMM Parkland District Meeting
Dauphin, Manitoba*

Jun 10, 2010

Jim Ferguson, Manager
Municipal and Business Programs



Waste Reduction and Recycling Support (WRARS) Levy

- Announced March 2009 Budget
- WRARS Fund established through amendment of *The Waste Reduction and Prevention Act*
- \$10 per Tonne Levy on all waste landfilled
- \$7 million in revenue projected 2010
- Three (3) phase introduction approach



Purpose

- Purpose:
 - Improve Manitoba's waste diversion rate
 - Encourage sustainable waste management practices
 - Enhance waste diversion activities such as recycling and composting



Supports Waste Reduction Objectives

- Disincentive for waste disposal - increase waste disposal costs
- Reward municipal recycling efforts through fund sharing formula
- Reduce waste bill through diversion – increase \$ reward through enhanced recycling/diversion
- Support E-waste and HHW programs until EPR Programs established
 - Stewardship Regulations approved February 2010



WRARS Fund

- Dedicated Fund established in WRAP Act
- All WRARS Levy Revenue deposited in Fund
- Annual Report and Audit requirements
- Disbursements
 - Fund Administration
 - 80% municipal recycling support
 - 20% administration, e-waste and HHW program support
- Green Manitoba to administer Fund



Program Details

- Private industrial sites exempt (single generator use)
- Applies to residential and ICI waste
- Burning is not diversion
- Waste Transfer Stations exempt
- Eligible diversion activities include: recycling, composting, wood chipping
- Maintain records for 5 years
- July 1, 2010 expanded diversion eligibility – e.g. composting, wood waste processing



Municipal Recycling Support

**20%
E-waste/HHW
Programs
Revenue Estimate
for 2010:
\$1 million**

**80% Municipal
Recycling Rebate
Revenue Estimate
for 2010:
\$6 million**

- MPSC / MMSM recycling support maintained
- Year 1 rebate based on MPSC reported tonnage
- Municipal share of WRARS Fund based on % of recycling contribution



Example Calculation

Example: Municipal Rebate Calculation (for a 6 month period)			
Municipality	MPSC Recycling Tonnes	% Share of Total Recycling Reported	\$ Rebate
Municipality A	2,000	57.14%	\$571,429
Municipality B	900	25.71%	\$257,143
Municipality C	475	13.57%	\$135,714
Municipality D	95	2.71%	\$27,143
Municipality E	5	0.14%	\$1,429
Municipality F	25	0.71%	\$7,143
Total Eligible Recycling	3,500	100.00%	\$1,000,000
Municipal Share (80%)	\$1,000,000		



Phase I – Class 1

- Major Class 1 landfills
- Levy introduced July 1, 2009 on landfills receiving more than 30,000 Tonnes of waste
 - City of Winnipeg (Brady Road)
 - City of Brandon (Eastview)
 - Mid-Canada (RM of Ritchot)
 - BFI – Evergreen (RM of Rosser)
- Levy remittances paid January 31, 2010 and every 6 months after
- Recycling Rebates issued to participating municipalities March 2010



Phase II – Class 1

- Levy introduced on all Class 1 landfills January 1, 2010
 - Affects 9 additional Class 1 landfills
 - registered December 2009
 - Weigh scale measurement required
 - 2 scale installations in process
- WRARS Levy payments due July 31, 2010 (remittance for 6 months period)
- Recycling Rebate Payment September 1, 2010
 - 53 Municipalities identified for rebate pool



Phase III – Class 2 & 3

- January 1, 2011 levy applied to all Class 2 and 3 landfills
 - Flin Flon and The Pas Class 1 Landfills included (scales required)
- Municipal/ANA/Conservation Landfills:
 - 58 Class 2 sites and
 - 95 Class 3 sites
- Volume to weight based measurement accepted (190 kgs / m³)
- Levy Payments Due July 31, 2011
- Rebate payments issued September 2011



Phase I Results

- Total Waste Reported: 390,000 Tonnes
- Total \$ Received: \$3.9 million
- Green Manitoba Programs
 - Administration: \$50,000 (1.28%)
 - E-waste and HHW Program (20%): \$770,000
- Municipal Rebate (80%)
 - 15 municipalities shared in pool
 - Recycling Reported: 25,391.4 Tonnes
 - Total Rebate: \$3.08 million
 - Per Tonne Payout: \$121



Why Measure Waste?

- Important waste management activity
- The estimated quantity of waste can be used to:
 - Project the life of existing landfills
 - Appropriately size new waste management facilities
 - Calculate unit cost of waste management
 - Measure the cost effectiveness of waste management services
 - Assess the effectiveness of waste reduction initiatives
 - Apportion waste costs to generators



Volume Based Reporting

- Guideline on measuring waste quantities based on volume to weight conversion factors will be developed
- Work with landfill operators to validate methods
- Proposed waste quantity estimate methods include:
 - Trench volume estimation
 - Loader bucket and truck counting
 - Random weighing and traffic counting
 - Site survey and in-situ density test
- Evaluating proposal for a set per capita rate (e.g. .87 Tonne per capita)



WRARS Next Steps

- Phase II Landfill / Recycling Program Registration Process (January – July 2010)
- Complete Waste Management Survey
 - 198 municipalities surveyed (numerous errors in dBase)
 - 43 compost sites (40%)
 - 58 waste transfer stations
 - 48 regional systems (127 municipalities)
 - 26 landfills closed (Class II & III)
- Finalize Waste Measurement Guide
- Confirm Expanded Waste Diversion Rebate (July 2010)
- Implement Web Based Waste Reporting System Implementation (Re-Trac)
 - Actual disposal and diversion report

National Waste Statistics

Table A: Waste Disposal by Province (2006)

Rank Waste Diversion		Waste Disposed (Tonnes)	Waste Disposed Per Capita (Kgs)	Diversion Rate (Percent)
1	Nova Scotia	401,670	430	40.7
2	Prince Edward Island	n/a	n/a	37.8
3	New Brunswick	450,238	601	35.9
4	British Columbia	2,917,080	675	31.9
5	Quebec	6,808,440	890	26.5
6	Ontario	10,437,780	822	18.7
7	Yukon	25,245	809	15.9
	Northwest Territories	42,884	1,011	15.9
	Nunavut	n/a	n/a	15.9
10	Alberta	3,819,872	1,133	14.6
11	Manitoba	1,024,272	869	13.0
12	Saskatchewan	833,753	844	11.4
13	Newfoundland	407,728	800	6.9
	Canada	27,249,178	835	22.0

Source: Statistics Canada

- ✓ High tipping fees are direct drivers in high diversion rate provinces – up to \$100 per Tonne

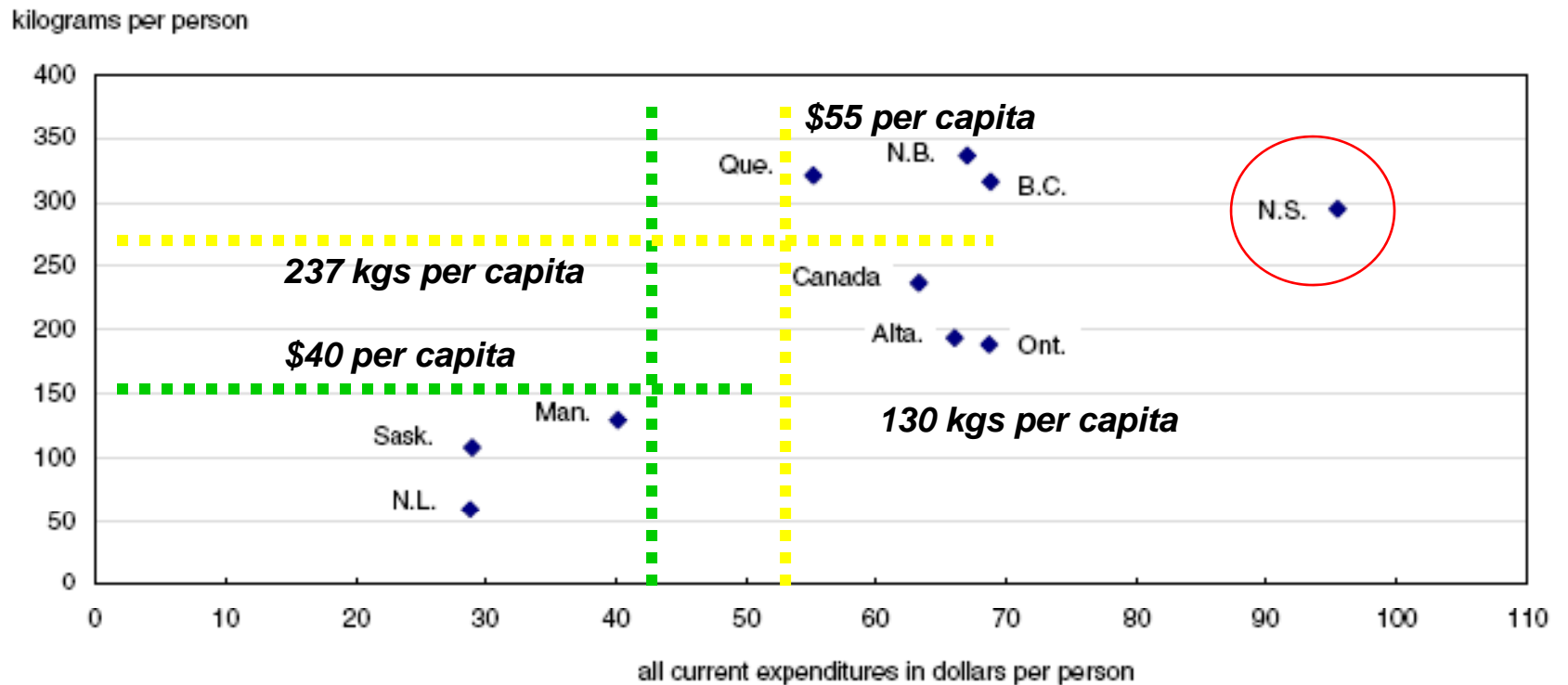


Tipping Fees

- National Average: \$62 per tone
- Average Tipping Fees
- BC: \$65 (High: \$65)
- PEI: \$100 (High: \$100)
- NS: \$64 (High: \$94)
- AB: \$25 (High: \$45)
- PQ: \$50 (High: \$73)
- MB: \$34 (High: \$50)

Investment in Waste Management

Chart 2
Waste diverted and local government current expenditures per capita, 2006



Source(s): Statistics Canada, Environment Accounts and Statistics Division



MPSC Program Results 08/09

- MB Product Stewardship Corp:
 - Revenue: \$8.9 million (2¢ levy)
 - Expenditures: \$9.23 million
- 188 community recycling programs
 - 80 curbside including 35 blue box systems (80% of waste)
 - 108 depot programs
- Recycling Support: \$8.66 million
- Recyclables collected: 70,338 T
 - 60.10 kgs / per capita
 - Cost per Tonne: \$131
- MPSC operations end March 31/10 (Multi-material Stewardship Manitoba now operational)

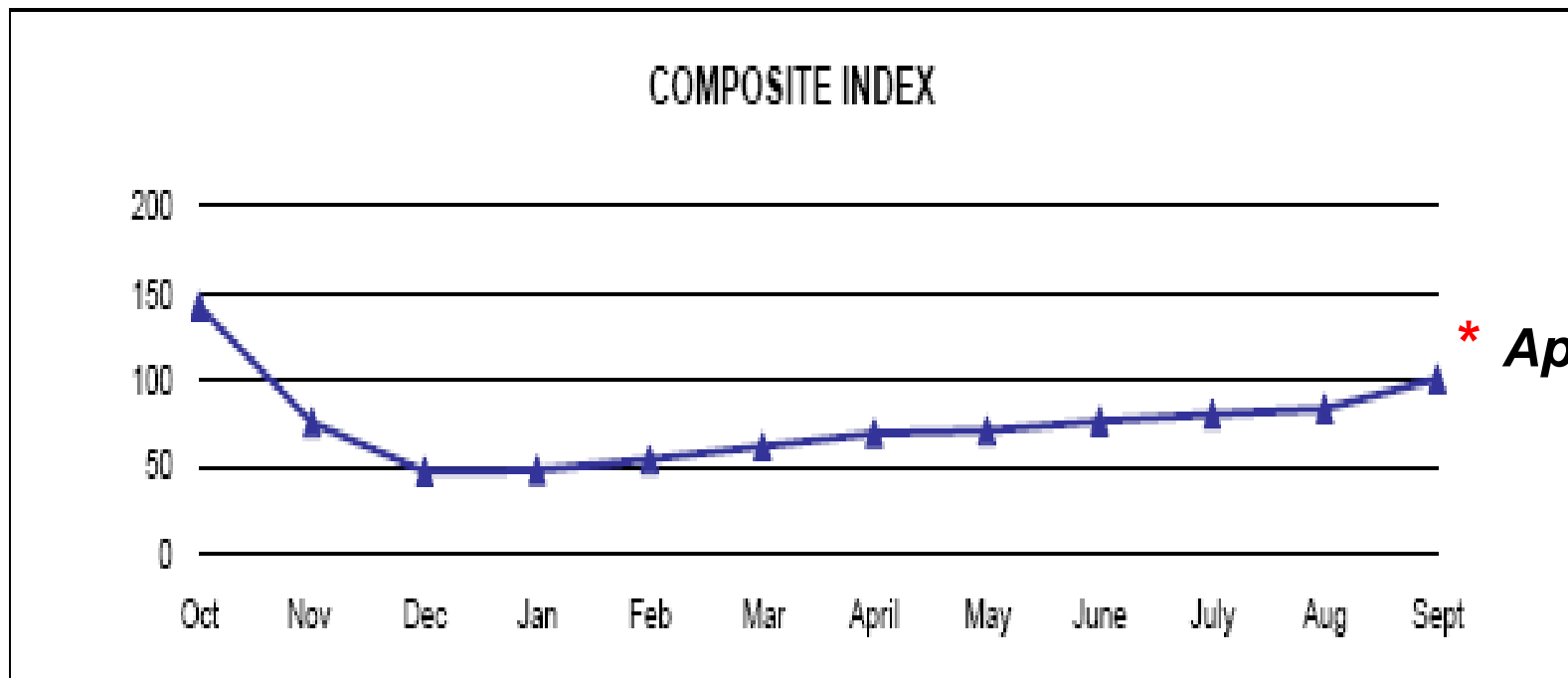


MB Recycling Program Costs

Pop. Category	Median Cost (\$/t)	Median Recovery (tonnes)	Median Recovery (kg/cap/yr)	Median Pop	No. of Programs	Lowest Cost Program	Highest Cost Program
0 - 1,000	\$330	32	46	779	44	\$141	\$895
1,000 - 5,000	\$214	108	54	2,004	58	\$97	\$508
5,000 - 15,000	\$182	480	61	9,311	20	\$36	\$391
Brandon	\$193	2,309	56	41,511	1	\$193	\$193
Winnipeg	\$122	43,761	69	633,451	1	\$122	\$122

Recycling Prices Recovering

Ontario Monthly Averages from Oct 2008 to Sept 2009
(CDN\$/Metric Tonne)





Achieving High Waste Diversion Results (+50%)

- Enhanced recycling systems
- User pay systems (tipping fees, pay per bag)
- Commercial waste charges
- Bag limits and Landfill bans
- Composting (yard and garden, kitchen waste, agricultural and commercial waste)
- Wood chipping
- Eliminate burning
- Commercial waste recycling
- ***Waste planning and regional waste partnerships***
- Promotion and education



LANDFILL

***WASTE
TRANSFER***

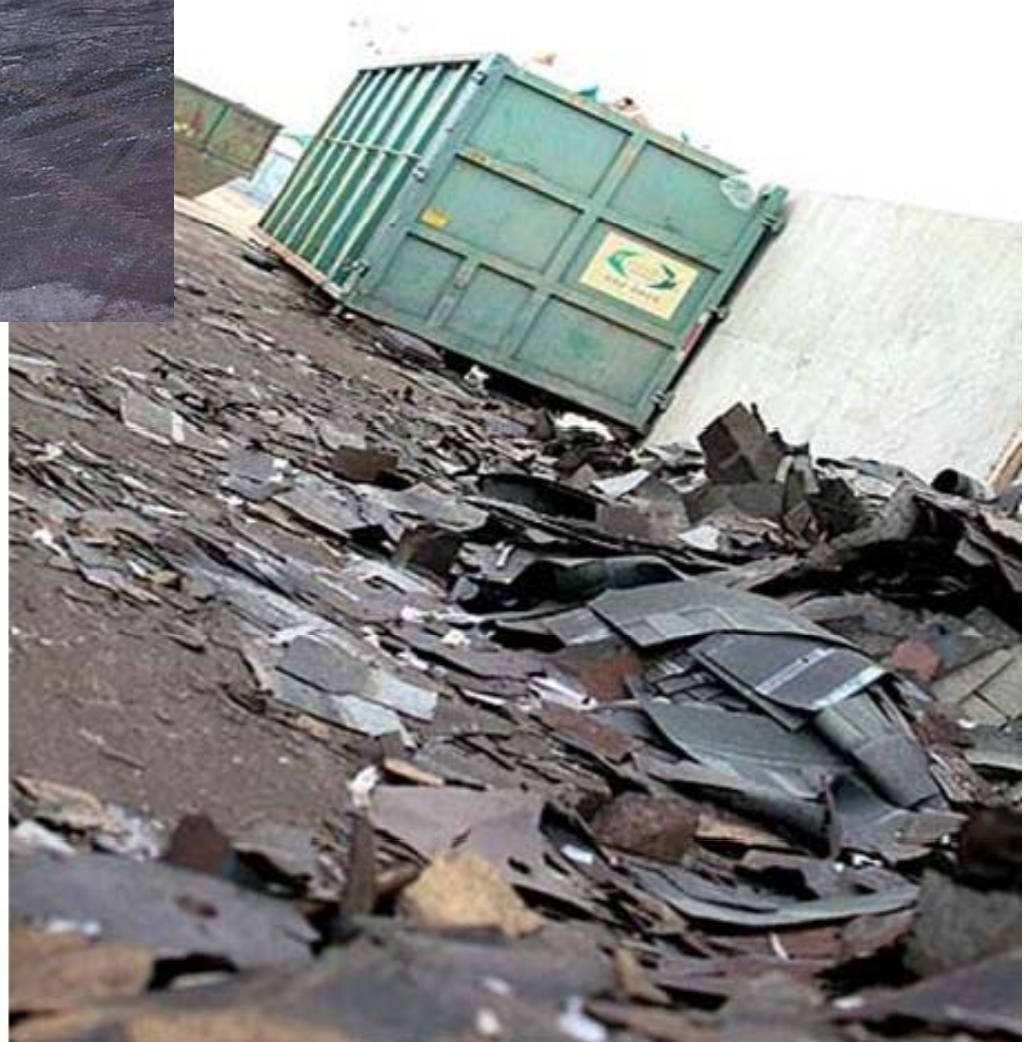


Recycling





SHINGLE RECYCLING



Used Oil



- 71 Eco-Centres provide convenient collection service for used oil, filters and containers (80% recovery used oil)
- Potential opportunity for coordinated HHW depot system

E-waste



Scrap Tires



Household Hazardous Waste



Wood Chipping



Brush Wood Chipper

**Eliminate Burning
at WDG's and
Transfer Stations**



Composting - Brandon



Windrow Turner



Turner in Action



Turner Blades



Watering the Windrows

Comments / Discussion

Green Manitoba - Microsoft Internet Explorer

File Edit View Favorites Tools Help

Back Forward Stop Refresh Home Search Favorites

Address <http://www.greenmanitoba.ca/cim/1001.dhtm> Go Links

Green Manitoba
An Agency of the Manitoba Government

HOME WASTE ENERGY WATER LIBRARY

Home > News

NEWS

ABOUT
EVENTS
SEARCH
CONTACT

Welcome to Green Manitoba

Green Manitoba was established to help build a sustainable and prosperous future for all Manitobans. By emphasizing practical approaches to waste reduction, energy efficiency, and water conservation in communities, homes, and businesses, Green Manitoba works to achieve a winning merger of environmental protection and economic growth throughout the Province.

Highlights

- **All electronic waste depots are now closed.** Please see the pdf at the bottom of this page for options on how to recycle your electronic waste.
- **Municipalities and Tire Dealers can now track their scrap tires online.** [Users please click here](#) for more information and to access the online system.
- [Click here](#) for the **Green Manitoba On-line HHW Appointment System** through Miller Environmental. For telephone bookings call Miller Environmental at 925-9600.

Context

- HOUSEHOLDS
- BUSINESS & INDUSTRY
- TEACHERS & STUDENTS
- GOVERNMENT

Green News!

[Home Depot will accept old CFL bulbs and recycle them.](#)

[Growing Green in Manitoba's Throne Speech.](#)

[Manitoba's Auditor general has released a report on the Province's Management of Contaminated Sites and](#)

www.greenmanitoba.ca

Thank you



Green Manitoba
An Agency of the Manitoba Government