

# The Future

What municipalities and young  
children have in common

AMM Workshop

February 2006

*Randy Fransoo*

*Dorothy Kaytor*



**Manitoba Centre for Health Policy (MCHP)**

# **How Do Educational Outcomes Vary by Socioeconomic Status?**

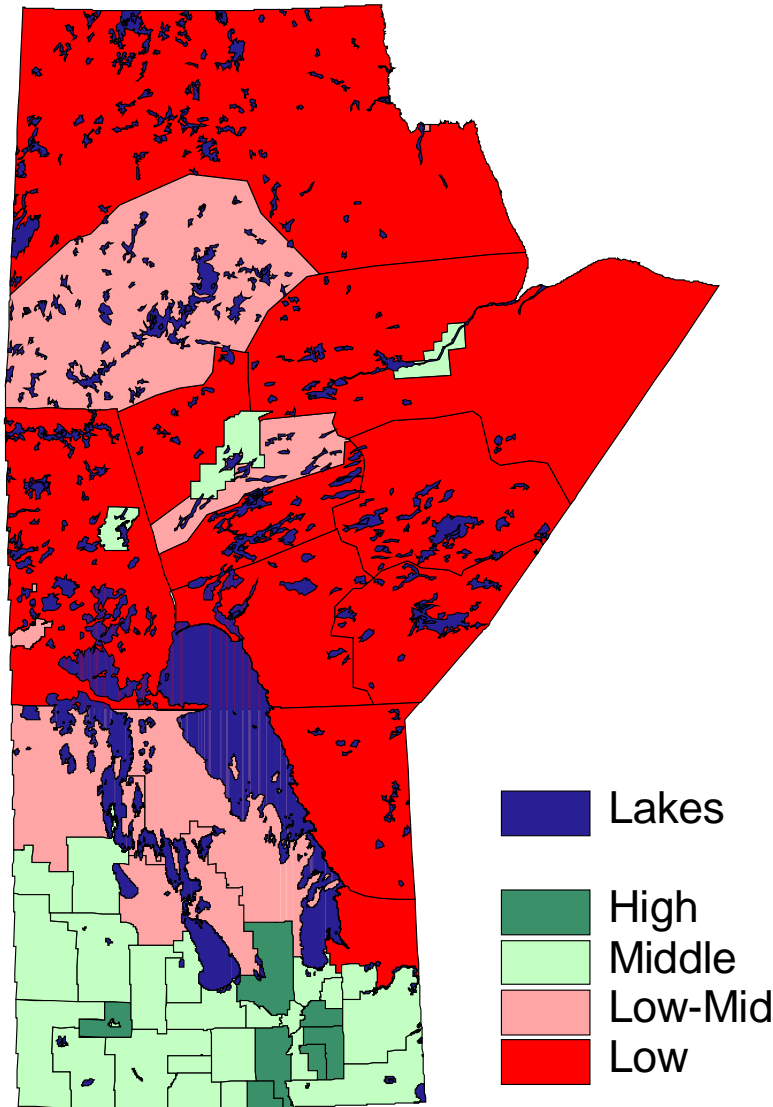
Key Findings from the Manitoba Child Health Atlas 2004

Marni Brownell, PhD  
Noralou Roos, PhD  
Randy Fransoo, MSc  
Anne Guevremont, MEd

<http://www.umanitoba.ca/centres/mchp>  
then click on 'Child Health Atlas'



# RHA District SES Groups, 2001 Census data



## Neighbourhood Socioeconomic Status

Assessed by: High school education, Unemployment rate, Single parent families, Female labour force participation



### High SES (Most Advantaged)

Pop = 95,901; Child pop: 30,556

SE Northern, SE Central, Cent East, Bdn Rural, IL Southwest, Springfield



### Middle Class

Pop = 294,736; Child pop: 83,923

SE Western, SE Southern, Cent Southwest, Cent Midwest, Cent North, Bdn West, Bdn East, Assin West 1, Assin North 2, Assin East 2, Assin West 2, Assin North 1, Assin East 1, IL Southeast, Winnipeg River, Iron Rose, Brokenhead, PL West, PL Central, F Flon/Snow L/Cran, Gillam/Fox Lake, Thompson



### Low-Mid

Pop = 66,673; Child pop: 21,085

IL Northeast, IL Northwest, PL East, PL North, Churchill, The Pas/OCN/Kelsey, Thick Por/Pik/Wab, Lynn/Leaf/SIL



### Low SES (Most Disadvantaged)

Pop = 42,700; Child pop: 19,614

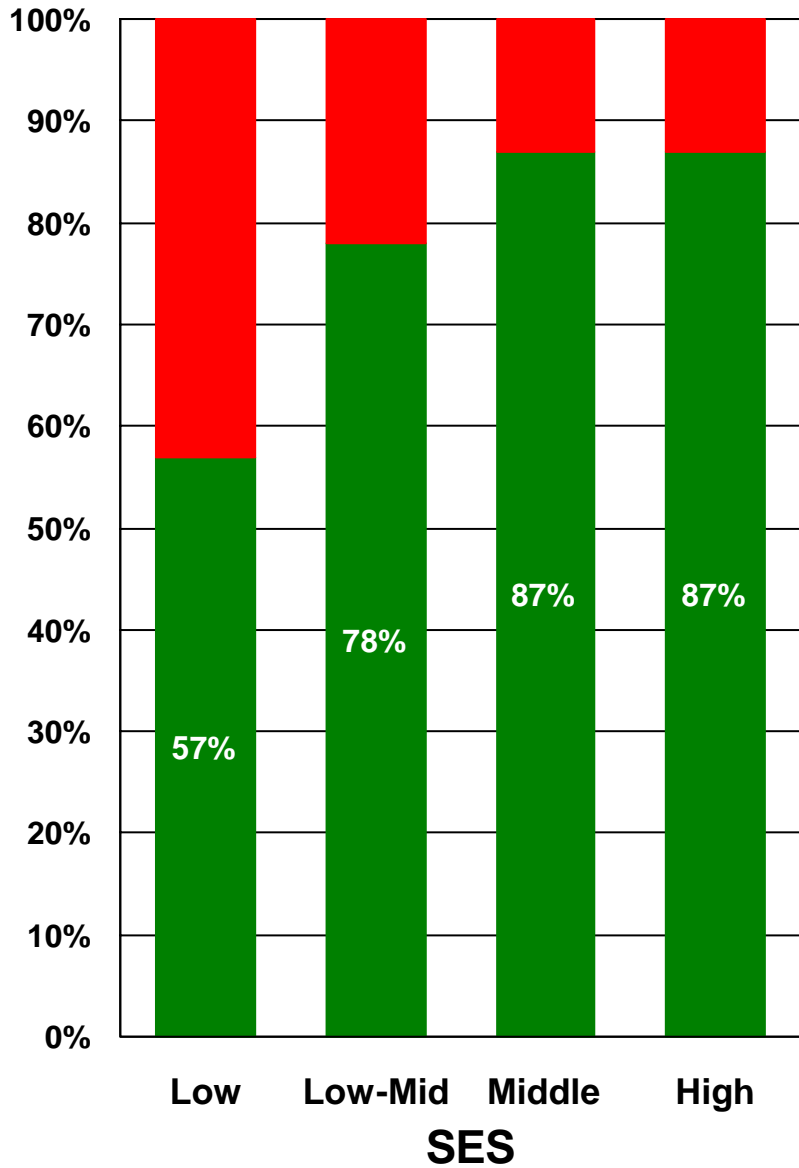
Blue Water, Northern Remote, Nor-Man Other, Tad/Broch/Lac Br, Island Lake, Sha/York/Split/War, Oxford H & Gods, Cross Lake, Nelson House, Norway House



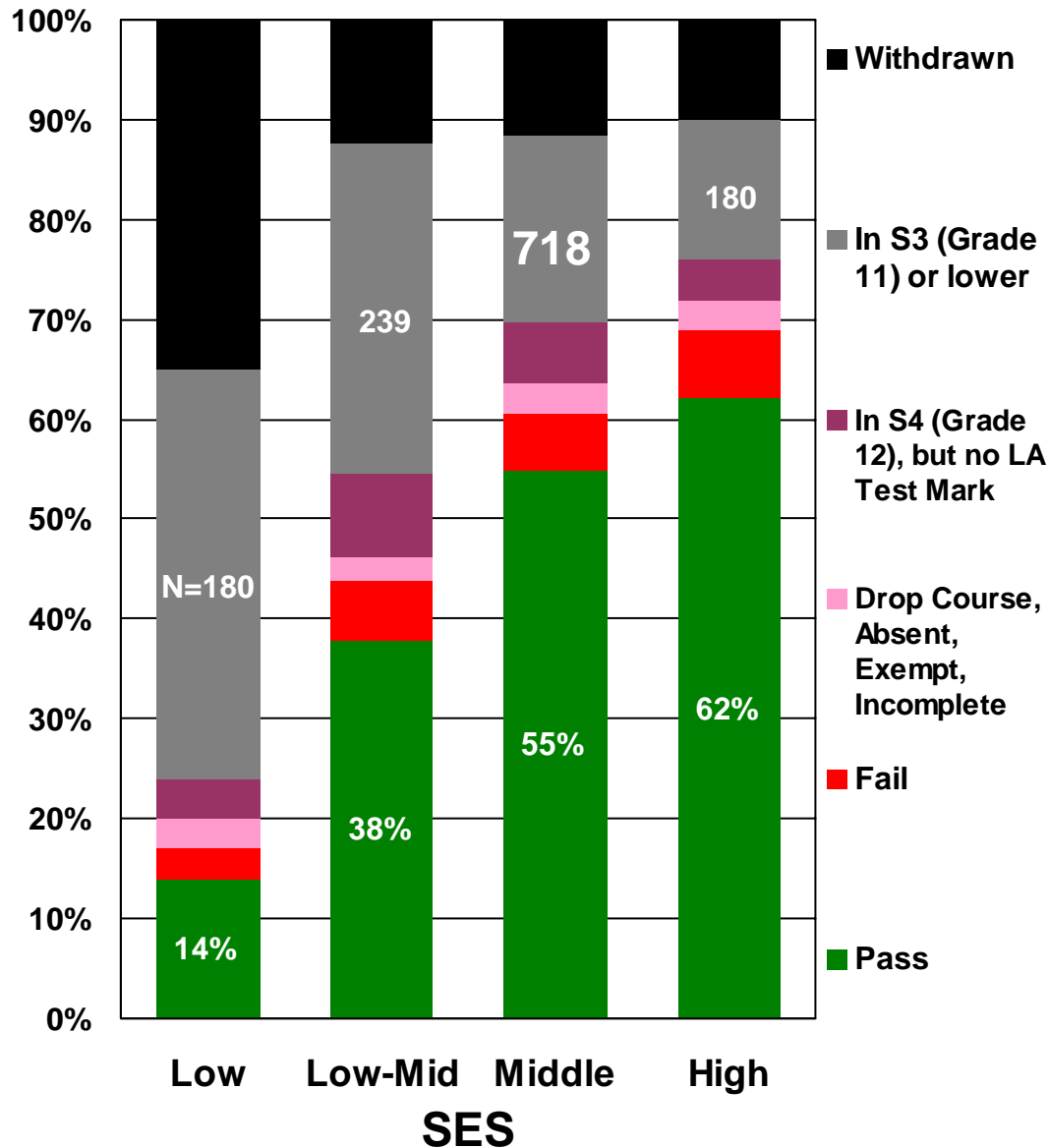
# S4 Student Performance by Non-Wpg SES Group

## Language Arts Standards Test 2001/02

### Pass/Fail rates of test writers



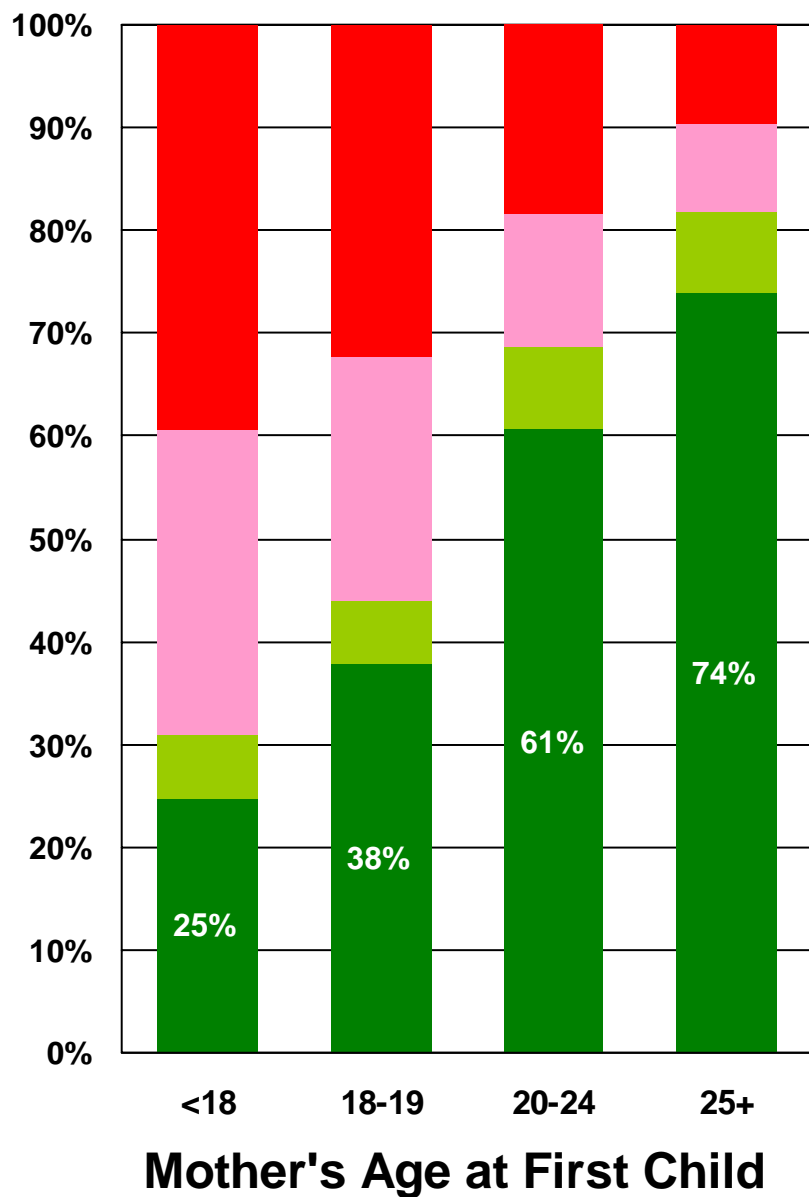
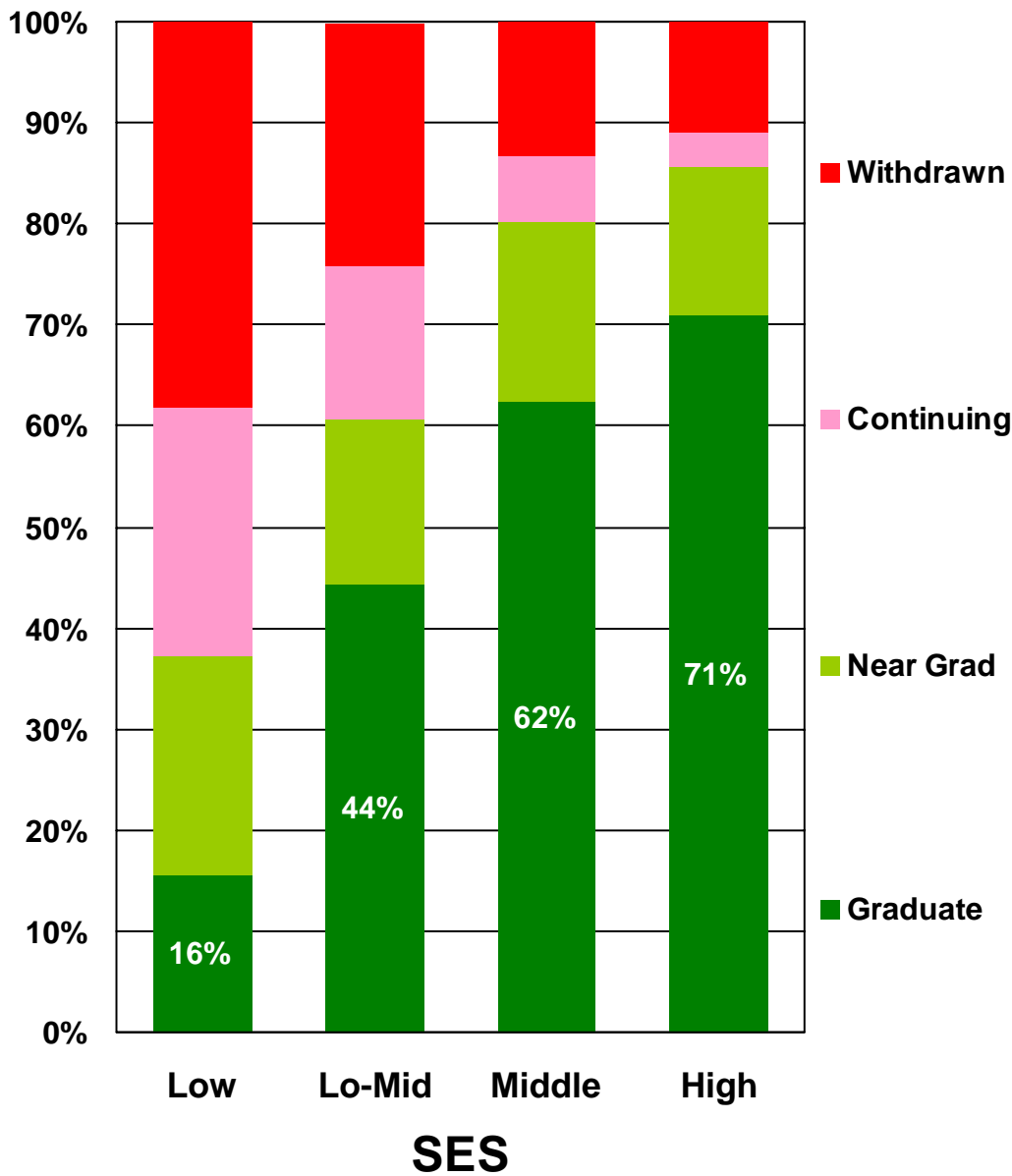
### 17/18 year olds who should have written





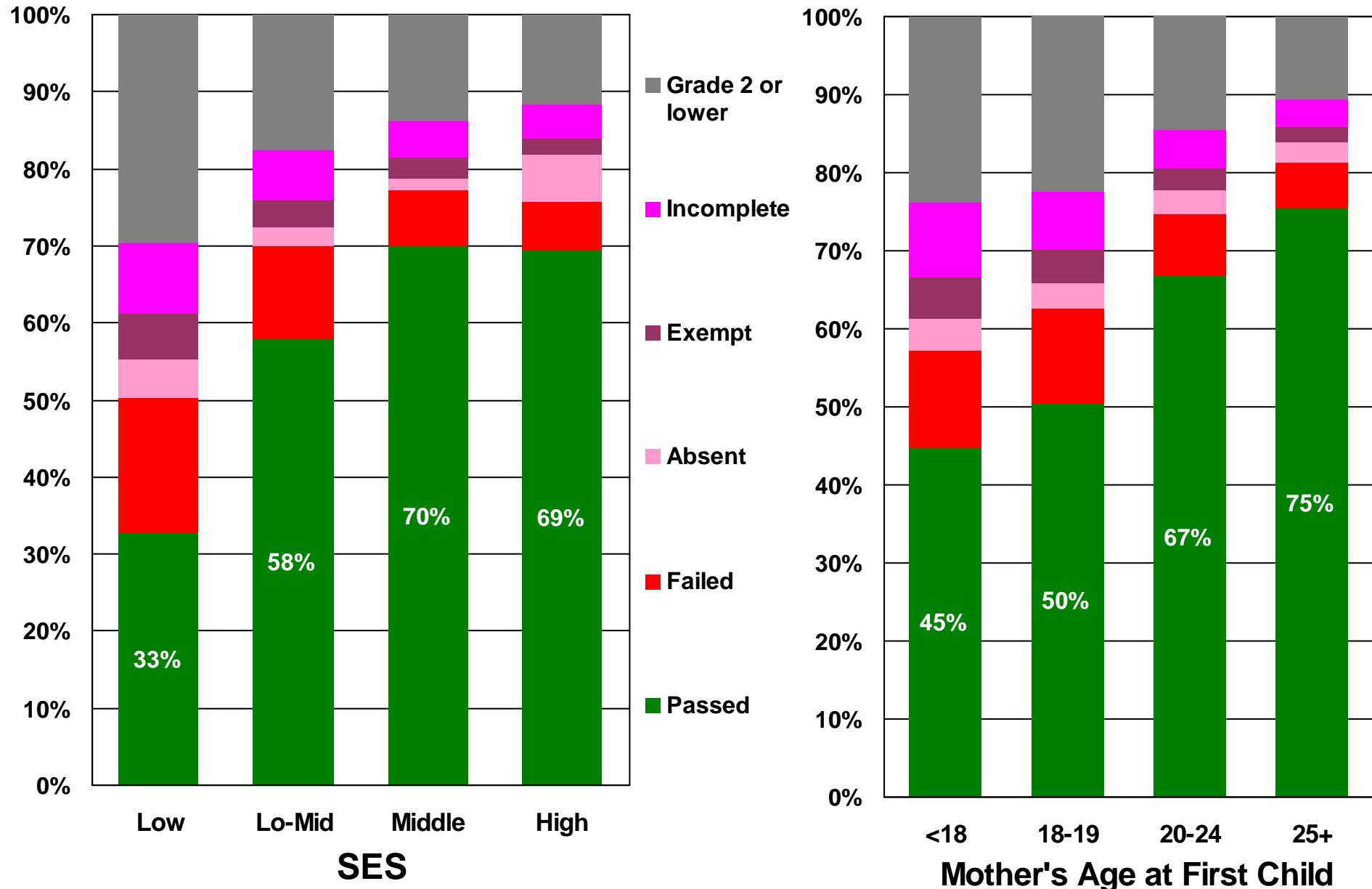
# High School Completion by SES & Mother's Age

S1 (Grade 9) students in 1997: What happens after 5 years?





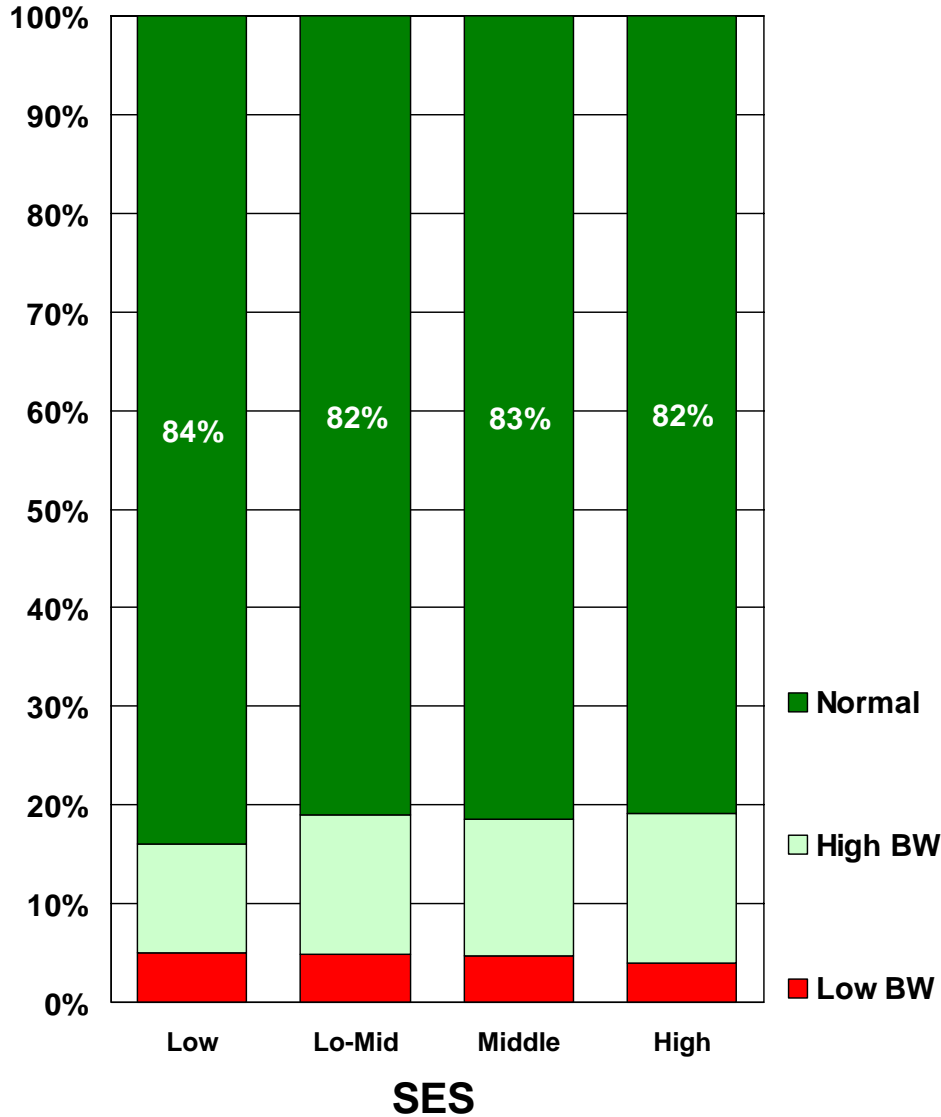
# Grade 3 Performance by SES and Mother's Age Language Arts Standards Test 1998/99



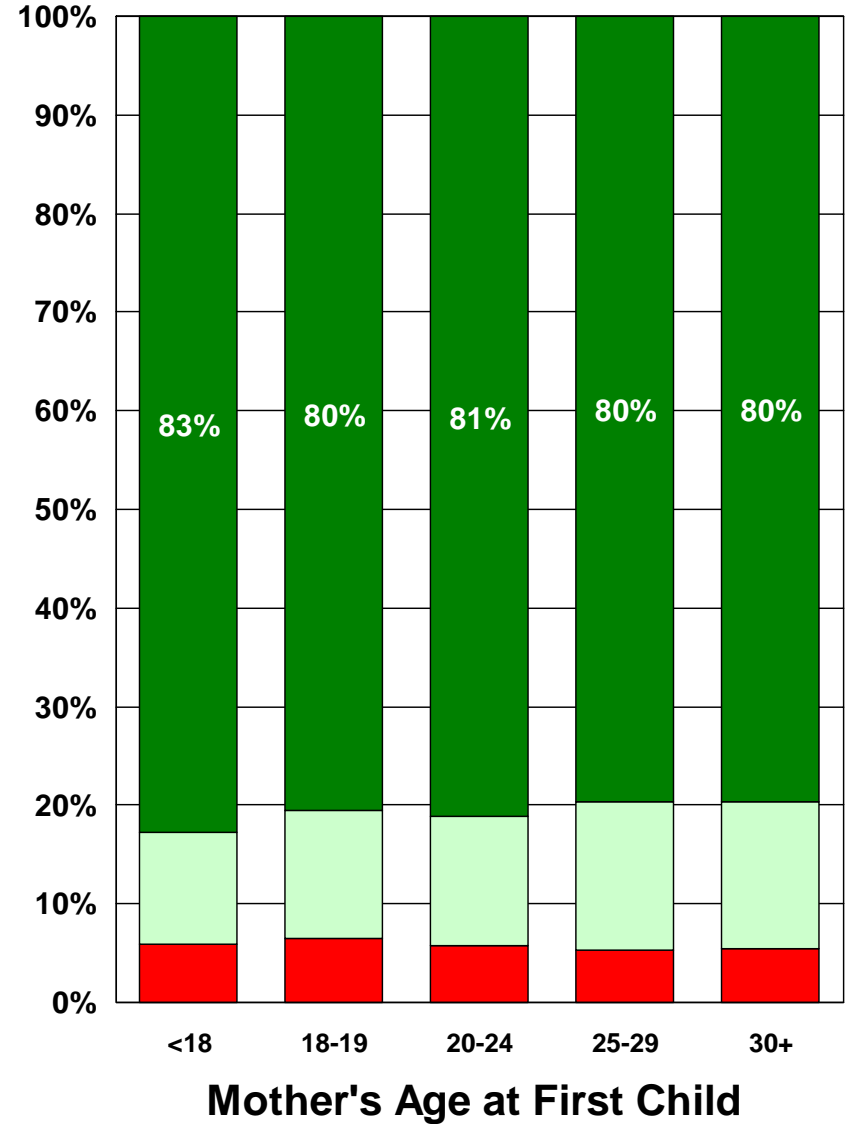


# Healthiness of Children at Birth

## Birthweights by SES



## Birthweights by Mother's Age





# What could be done?

- Enriched early childhood environments
  - Quality child care, especially for kids in low SES families
  - Research shows that quality ECD helps all, but makes largest difference for those at highest risk
    - ✓ exactly what we need to flatten the gradient
- Enhanced programs in school years
  - (e.g. Early Literacy)
- Engage with health authority, community groups, parents, etc



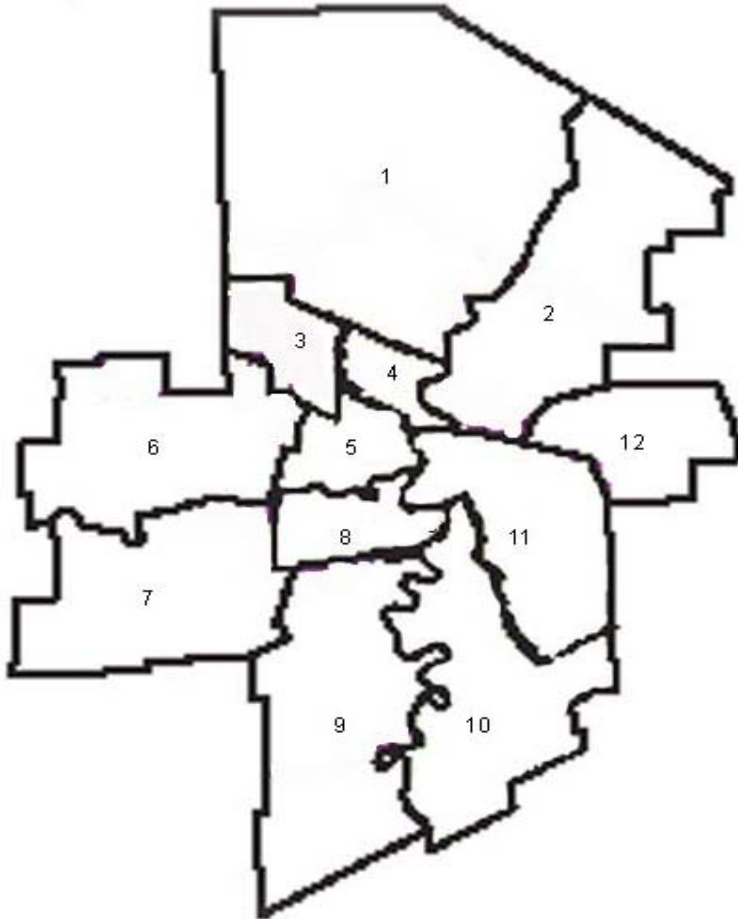
# Take Home Messages

- Disadvantaged groups at **very** high risk for poor outcomes
  - Residents of low SES areas
  - Children of young mothers
- Not all disadvantaged children do poorly
- Majority of total **number** of kids with poor outcomes are not in most disadvantaged groups
  - But low SES kids are also less likely to recover from a setback
- Challenge: make system universal, and needs-based
- Evaluate your programs, so you & others can learn

# How can municipalities become more family-friendly ?

- No charge use of space
- Extend liability insurance
- Provide space for toy & book lending programs
- Use of photocopier
- Access to lotteries grants
- Grants in lieu of property taxes
- Co-sponsor farm safety programs
  
- Other ideas?

# Coalitions in Winnipeg



## Coalition

1. Seven Oaks
2. River East / Elmwood
3. Inkster
4. Point Douglas
5. Downtown
6. St. James/Assiniboia
7. Assiniboine South
8. River Heights/ Fort Rouge
9. Fort Garry/ St. Norbert
10. St. Vital
11. St. Boniface
12. Transcona
13. Indian & Metis Friendship Centre of Winnipeg

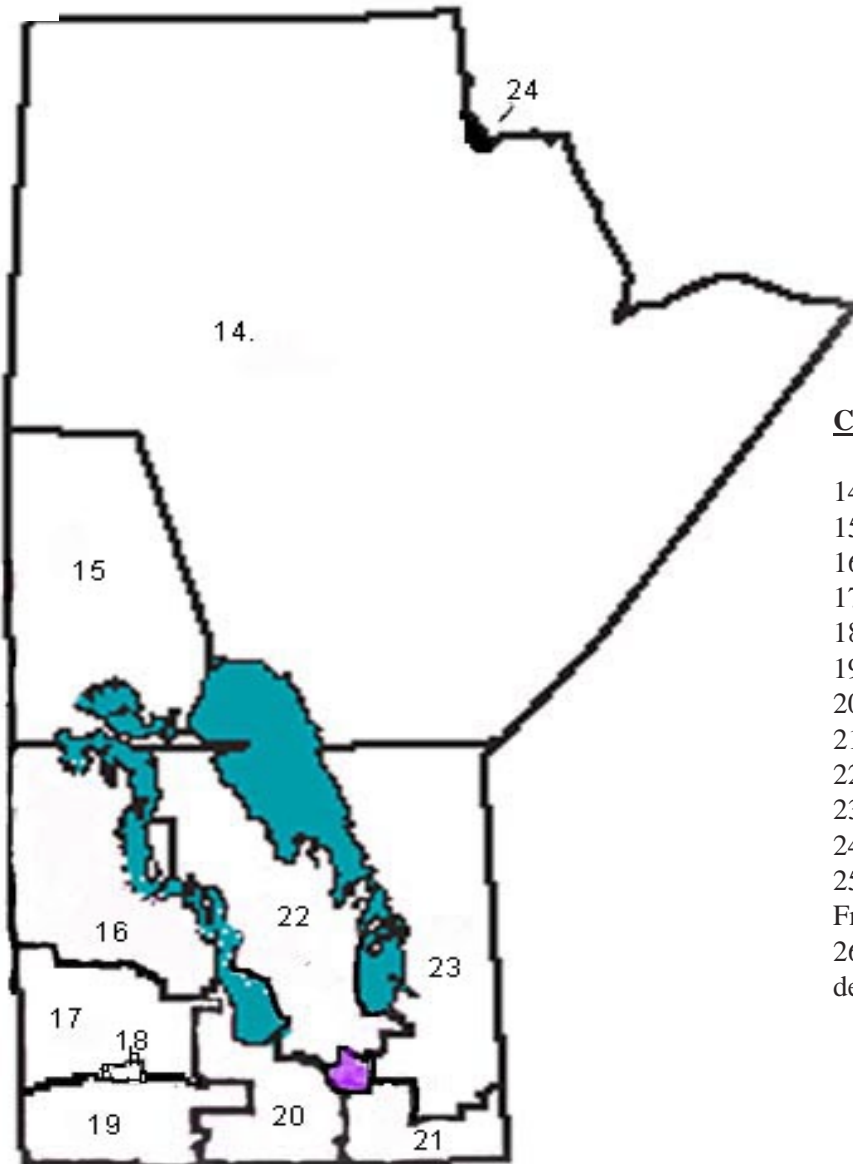
## Contact

- Ms. Cathy Dearden  
Ms. Trish Ward  
Ms. Ingrid Zacharias  
Ms. Lisa Janke  
Ms. Sharon Morgan  
Ms. Ingrid Peters Derry  
Mr. Blair Robillard  
Ms. Elaine Sourisseau  
Ms. Sandy Allen  
Ms. Tannis McKinney  
Ms. Susan Stratford  
Ms. Monique Fillion  
Ms. Dayna Brentnall  
Ms. Rita Lynn Emerson

## Telephone

- 586-8061  
982-1720  
667-7130  
940-2106  
942-0040  
475-5755  
885-1334  
488-1767  
791-0956  
453-7784  
940-1656  
253-2685  
736-4976  
586-8441

# Coalitions in Rural Manitoba



<u>Coalition</u>	<u>Contact</u>	<u>Telephone</u>
14. Burntwood	Ms. Iris Murray	778-8420
15. Nor-Man	Ms. Deb Quickfall	687-1748
16. Parkland	Ms. Marli Brown	622-2360
17. North Assiniboine	Ms. Dorothy Kaytor	328-7541
18. Brandon	Ms. Marie Wotton	726-6280
19. South Assiniboine	Ms. Vicki Neufeld	523-7531
20. Central	Ms. Lois Burr	745-3821
21. South Eastman	Ms. Trish Braun	346-7019
22. Interlake	Ms. Doreen Fey	467-4742
23. North Eastman	Ms. Rhea Galeschuk	753-2022
24. Churchill	Ms. Georgina Berg	675-2262
25. Manitoba Association of Friendship Centres	Ms. Ella Mayer	942-6299
26. Coalition Francophone de la Petite Enfance	Ms. Janine Bertrand	878-9399